

THE NEW ZEALAND JERSEY CATTLE BREEDERS ASSOCIATION (INC)

# jersey FOCUS

OFFICIAL PUBLICATION OF JERSEY NZ | ISSUE MARCH 2018



ONCE A DAY AND JERSEYS  
– A TRUE SUCCESS STORY

PROTECTING YOUR FARM  
FROM MYCOPLASMA BOVIS

jersey<sup>NZ</sup>



*Combines type & production!*

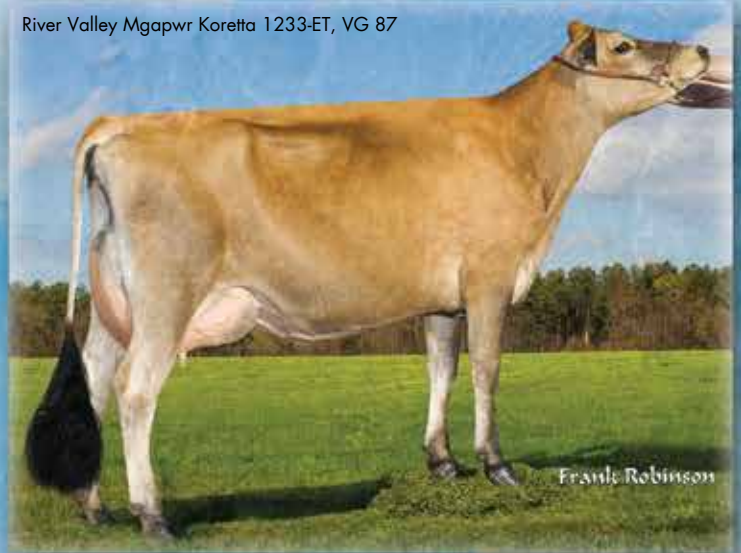
# MEGAPOWER

RIVER VALLEY PF MEGAPOWER-ET

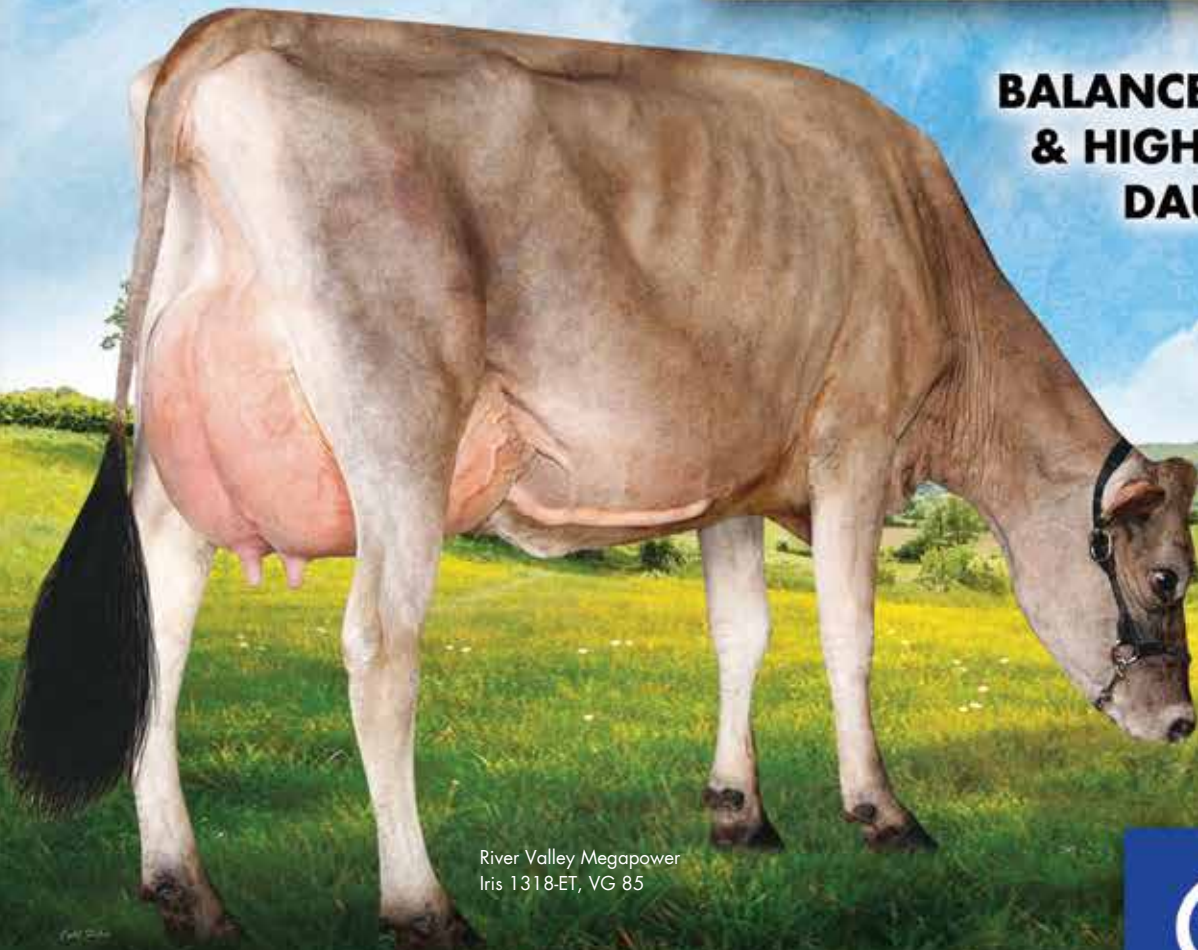
MEGATRON X TBONE X ABE **A2/A2**

- Ranks in the Top 5 in breed for Fat at **+83 PTAF**
- Improves Feet and Legs
- Great overall type **+1.60 PTAT**
- Strong, capacious cows
- Udder improver **+16.5 JUI**

River Valley Mgapwr Koretta 1233-ET, VG 87



**BALANCED PROOF  
& HIGH QUALITY  
DAUGHTERS!**



River Valley Megapower  
Iris 1318-ET, VG 85



**WORLD WIDE SIRES • NEW ZEALAND**

[www.wwsiresnz.co.nz](http://www.wwsiresnz.co.nz)

Email: [office@wwsires.co.nz](mailto:office@wwsires.co.nz) • Free Phone: 0800 60 70 70



**WWS**

BY DESIGN... NOT CHANCE

# jersey FOCUS



## Once a day & Jerseys I 8

Matthew and Emma Darke are true Jersey converts



## Totara Dale Stud I 50

Equity partnership forms the basis of the Totara Dale Stud in Dargaville

- |  |  |
|--|--|
| <ul style="list-style-type: none"><li>2 President's Perspective</li><li>3 General Manager's Comment</li><li>4 Jersey NZ Strategic Plan 2018</li><li>4 Board Sub-Committees 2017-2018</li><li>6 Office News</li><li>7 Jersey NZ Dates to Remember &amp; Jersey NZ Clothing</li><li>8 Once a Day and Jerseys - a true success story</li><li>11 Jersey NZ Scholarship fund</li><li>13 Jersey Future - Your Future</li><li>15 Breeding Worth - Annual update to economic values</li><li>16 TOP 30 Jersey bulls on RAS list</li><li>17 New Jersey graduates to build a healthy and efficient Jersey herd - CRV Ambreed</li><li>19 Two new high ranking young Jersey bulls now available in New Zealand - Genetic Enterprises</li><li>20 The Game Changers - LIC</li><li>21 WJCB Youth Symposium</li><li>23 Impact from Danish Sires - Samen NZ</li><li>24 Jersey NZ - 2018 Annual AGM &amp; Conference, Whangarei</li><li>25 Protecting your farm from Mycoplasma Bovis</li><li>26 Follow up on Jersey NZ animals at Massey University</li><li>27 New members</li><li>28 New member? Jersey Plus Registrations!</li><li>29 TOP &amp; Judging - Educational, fun &amp; informative</li><li>32 Groundbreaking research on heifer development</li><li>35 JerseyGenome™ - The proof is in &amp; updates</li></ul> | <ul style="list-style-type: none"><li>39 Somatic Cell now included in PW</li><li>40 World Congress on Genetics Applied to Livestock Production visit</li><li>41 All things Jersey collage</li><li>43 TOP Review 2017</li><li>44 Production Highlights</li><li>46 Industry Affairs</li><li>48 Youth Council Report</li><li>48 Murray Harnett Challenge 2018</li><li>49 Who are our latest Youth Council members?</li><li>50 Totara Dale Stud - Growing their equity</li><li>52 Paddock photography 101</li><li>53 Kellog Rural Leadership</li><li>54 International Dairy Week - Outstanding success</li><li>58 Jersey NZ Youth heifer raffle</li><li>59 Semex Regional Jersey On-Farm Challenge November 2017</li><li>62 WJCB Annual Conference &amp; Tour to the US - June 2018</li><li>66 Joe McGrath - M. Bovis - A bad situation</li><li>69 North Island &amp; South Island Championships</li><li>70 NZ Dairy Event 2018</li><li>73 World Wide Sires All Breeds Young Judge Competition 2018</li><li>74 Obituaries</li><li>75 In my Opinion</li><li>78 Club reports</li><li>81 Club contacts</li><li>82 Advertisers index</li></ul> |
|--|--|

595 Ruakura Road  
RD6, Hamilton 3286

Telephone: 07 856 0731

Email: [info@jersey.org.nz](mailto:info@jersey.org.nz)

Website: [jersey.org.nz](http://jersey.org.nz)

Facebook: Jersey NZ

ISSN 2537-9232.

## Disclaimer

Statements made by contributors to the Jersey FOCUS or views expressed by writers of Letters to the Editor of the Jersey FOCUS are not necessarily those of the New Zealand Jersey Cattle Breeders Association (Inc).

## Front cover

Jennifer Thomas, niece of Graeme Collins - Waiteitei Jerseys at Lower Waikato Jersey Cattle 50th Show held at Woodlands Estate, Gordonton.



## President's Perspective

**With our vision “Jersey – No1 Breed” the year was off to a brilliant start when the Jersey team of four won the Wilbur Trophy at Dairy Event.**

This was the second year in a row and the team was comprised of predominantly Ferdon Genetics. Over the last few years of Dairy Event, the growth of Jersey exhibitors has increased and it is encouraging to not only see the standard of animals coming through but the increase in young people participating and achieving.

Recently the news has been filled with the issue of the introduction of Mycoplasma Bovis (M. Bovis) into our country. As a result, we have included a couple of articles into this issue to increase your awareness. Whatever the final outcome of this outbreak, it draws our attention to a number of key procedures which should be in place at all times – hygiene being at the centre. Over the years we have probably become too complacent about procedures for visitors on farm; particularly around calf sheds, paddock walks and dairy sheds. It has been interesting to note that even ensuring farm clothes are clean everyday will help towards providing a barrier for transfer. I encourage you all to take time to review some of your processes – in the end you will be the beneficiary.

NAIT – love it or hate it. Recording the movement of stock is vital in providing a vehicle for containment and control of movement of diseases. How many of you have a NAIT number for your club shows? All movement of stock needs to be traceable whether it be a day trip or off to grazing.

The Industry Affairs committee have had interesting discussions with NZAEL and the role that we as Jersey farmers play when looking at reproof bias correction.

The best resource for this work are the records that we as farmers provide, therefore accuracy is vital and in particular parent verification. Simply put if you're not 100% sure of the parentage then do a DNA test – let's do everything we can to make the data more accurate. Liveweight information is another area that provides valuable information – if you weigh your animals then input the data so that it can be accessed.



Alison Gibb

After 20 years we finally have had a review of PW – a welcome event for the Jersey breed but are we fully there yet? In my view there is still much work to be one in this area but at least a start has been made and the work being done with the Industry Affairs committee and the Farmer Advisory Group facilitates an opportunity for input into those discussions.

We all believe in the Jersey breed and I believe the opportunities for the breed have never been better. As I meet with farmers I am encouraged by the stories I hear; how well Jerseys fit into their system, the excellent production they do, their adaptability to environmental challenges. I encourage you all to openly and proudly share those stories with the greater farming sector, talk to your neighbour, share at discussion groups, drop a Jersey Focus or two into the neighbourhood letter boxes. We all have a responsibility to promote the breed, contribute the very best accurate data and lead the way as innovative Jersey breeders.

**Alison Gibb - President**

### The Jersey FOCUS

The Jersey FOCUS is the official publication of Jersey NZ published bi-annually in March (Autumn) and September (Spring) respectively.

Jersey NZ is the official trade name of the New Zealand Jersey Cattle Breeders' Association Inc.

### Jersey NZ Staff



**Pam Goodin**  
General Manager  
E: pgoodin@jersey.org.nz



**Melissa Goodman**  
Member Services  
Administrator  
E: mgoodman@jersey.org.nz



**Angela Makara**  
Promotions & Marketing  
Co-ordinator  
E: amakara@jersey.org.nz



**Stacey Allen**  
Business Administrator  
E: accounts@jersey.org.nz

## General Manager's Comment

Strategy has been the focus of Board and management over recent months, with an update to include a BHAG, otherwise known as a Big Hairy Audacious Goal at our most recent strategy session in October. This goal (p.4) sets out our aim to reach 40% of the NZ dairy population by 2030. To that aim, we have completed a significant amount of background work over the last few months, and work is now ramping up towards some significant promotional activities over the next few months.

Two exciting breeder profiles are included in this issue of the Jersey FOCUS. Matthew and Emma Darke of Kiokio proudly share the value of Jerseys on their Once a Day herd at Aria in the King County. President Alison Gibb has contributed an article on the Totara Dale herd of Nick and Stephanie Browning and their growth via equity partnership. Want to know why the Jersey is the best cow for the New Zealand dairy farmer? Check out these articles.

Regular Jersey FOCUS contributors include Dr. Joe McGrath with his take on the mycoplasma bovis issue, and we invited Stephen Bell-Booth of Bell Booth Ltd to report on ground-breaking research on heifer development. Once again, Industry Affairs Convenor Roger Ellison updates us on the work of his Committee in advocating for the Jersey breed within the NZ dairy industry. With PwC contributor Brent Goldsack taking on a new role as Fonterra Director in 2017, we are working with PwC on a new contributor. Watch this space.

Youth are a vital component of the future of the Jersey breed, and we meet the two new members of the Youth Council. Julie Pirie gives us a report on the very successful study tour to International Dairy Week in Australia with some of our youth members.

We celebrate the success of Crystal Scown, who won both the Murray Harnett Challenge (Jersey Young Judge Competition) and the World Wide Sires All Breed Young Judge competition held at the NZ Dairy Event. This is an achievement to be enormously proud of for Crystal.



Pam Goodin

Celebrating the success of Jersey NZ members through the 2017/18 show season, we congratulate the NZ Dairy Event in their tenth season. Jersey NZ has been a supporter both as a sponsor and trade site exhibitor since the shows inception, and this year the event also hosted our North Island Championships. Most importantly, it was a great show for Jerseys.

Members will be aware that we are currently running a youth raffle. With the World Jersey Conference in the US fast approaching, the intention of this raffle is to help subsidise some of our young breeders to attend the planned youth symposium. With tickets at only \$50, there are six heifers to choose from, with something to suit every member's requirements. We also encourage any young breeder interested in attending the youth symposium to apply for this funding. We would love to see New Zealand well represented in this world forum.

**Pam Goodin - General Manager**

### Our Strategic Purpose

To promote and drive the growth of the Jersey breed throughout New Zealand.

### Animal Evaluation Data

Unless otherwise stated, all BW, PW and LW ratings shown throughout this issue are as at the Animal Evaluation run of 17 February 2018.

Unless otherwise stated, all NZMI figures quoted throughout this issue are as at the NZMI run of 17 February 2018.

### Jersey NZ Board



**Alison Gibb**  
President  
Taupiri  
E agibb@jersey.org.nz  
M 027 481 0820



**Peter Gilbert**  
Ashburton  
E pgilbert@jersey.org.nz  
M 027 435 6334



**Steve Ireland**  
Vice President  
Temuka  
E sireland@jersey.org.nz  
M 021 214 1613



**Barry Montgomery**  
Dargaville  
E bmontgomery@jersey.org.nz  
M 021 034 0068



**Tony Landers**  
Hawera  
E tlanders@jersey.org.nz  
M 027 458 4465



**Glenys Ellison**  
Hamilton  
E gellison@jersey.org.nz  
M 021 147 4490



VISION			
JERSEY – NO 1			
PURPOSE			
To promote and drive the growth of the Jersey breed throughout New Zealand			
BHAG (Big Hairy Audacious Goal)			
Jersey #1 Breed			
2020 – 15%   2025 - 25%   2030 – 40%			
VALUES			
Collaborative – Sustainable – Integrity - Quality			
STRATEGIC FOCUS AREAS			
MARKETING & PROMOTIONS	JERSEY GENETIC ADVANCEMENT	YOUTH	GOVERNANCE & MANAGEMENT CAPABILITIES
<ul style="list-style-type: none"> <li>Develop Marketing &amp; Communication plan for the next 12 – 24 months</li> <li>Develop value statement propositions</li> <li>Locate research that supports marketing plan</li> </ul>	<ul style="list-style-type: none"> <li>Jersey Future promoted and active</li> <li>JerseyGenome promoted and active</li> <li>BW development with NZAEL</li> <li>Develop research opportunities with Dairy NZ</li> <li>TOP &amp; Classification</li> </ul>	<ul style="list-style-type: none"> <li>Review membership database / categories to reflect youth involvement</li> <li>Development / support of Youth Council</li> <li>Youth Ambassador programme implemented</li> <li>Youth scholarship programme re-launched</li> <li>Judging</li> </ul>	<ul style="list-style-type: none"> <li>DIGAD – Breed Society solution decided</li> <li>Compliance – Policy Reviews, Standard Operating Procedures, Audit &amp; Risk Committee formed</li> <li>Human Resources – Staff training and development, Board and staff appraisals implemented</li> <li>Sponsorship – opportunities identified</li> <li>Committee Development</li> <li>Financial Capabilities</li> <li>Jersey Marketing Services Ltd</li> </ul>

## Board Sub-Committees 2017–2018

### Industry Affairs

Roger Ellison, Warren Berry, Scott Townshend, Toby Sneddon, Julie Pirie, Glenys Ellison, Alison Gibb, Clive Perrott

### Judging

Barry Montgomery, Peter Gilbert, Ross Riddell, Richard Adam, Christina Jordan, James Wallace

### Classification

Barry Montgomery, Peter Gilbert, Graeme Collins, Maurice Pedley, Robert Hall,

### Youth Council

Euan Reeve, James Wallace, Philip Brewster, Paul Edwards, Cameron Townshend, Sophia Clark, Alison Gibb

### Youth Committee

Peter Gilbert, Euan Reeve, Julie Pirie, Matthew Satherley, Graeme Wallace, Nick Browning, Corey Ferguson

### Marketing & Promotions

Alison Gibb, Glenys Ellison, Angela Makara, Phillipa Adam, Marion Johnson, Colin Hickey, Danyel Hosto, Michelle Flay, Alayna Wallace

### Genetics

Steve Ireland, Trent Paterson, Tony Landers, Ross Riddell, Toby Sneddon, Barry Montgomery

### Annual Conference Organising Committee

Marian Wallace, Alison Gibb, Pam Goodin, Karen Fitzgerald, Ross Turner, Marion Johnson, Gail Gray

Convenors are listed first.

Please see the Director contact details listed on page 3 or contact the office for Convenor contact details

# JERSEYS



[www.jersey.org.nz](http://www.jersey.org.nz)

## Office News

### Welcome

In mid-January we welcomed Stacey Allen to the Jersey NZ team as Business Administrator. Many of you will already have had contact with Stacey over the phone. Stacey is an experienced accounts administrator, and it is in this area where her primary focus will be, looking after the day to day accounts for Jersey NZ, Ayrshire New Zealand and NZ Milking Shorthorn Association. Stacey will also be responsible for administration on judging, production awards and youth programmes across all three breeds. She has already proven herself to be an asset to the team, please join us in welcoming her.

### Office Refurbishment

In November last year, we were finally able to get our office refurbishment underway. The old, threadbare carpet was replaced with modern carpet tiles, and the walls were painted. The old desks were replaced and excess furniture disposed of. Welcoming artwork was installed in the outside corridor, clearly identifying us. This did necessitate staff working a few days from home, we thank members for bearing with us through these periods.

This was the first refurbishment since Jersey NZ purchased the wing on the LIC campus over 30 years ago and it was well overdue. There will be more 'historical' artwork in a modern format added over the coming months, and AV equipment will be installed in the meeting room to allow remote access to meetings. The Jersey NZ team are really enjoying the updated space.



Photo – Members Services Administrator Melissa Goodman gets involved boots and all at the TOP & Judging Day held in Waikato, February 2018

### jersey<sup>NZ</sup> MARKETING

All administration except for the provision of three generation pedigrees for all auction sales is now being administered directly by the Jersey Marketing team.

All requests for auction information, catalogues, sale entries etc should be directed to:

Ross Riddell - JMS Business Manager  
M: 027 2111112 or email: [riddell@jersey.org.nz](mailto:riddell@jersey.org.nz)



## March 2018

- 8 Board Meeting - Southland
- 8 Southland Judging School & Certification day
- 11 Lower North Island Judging School & Certification day
- 15 RAS Remits and Notices of Motion
- 20 TOP training day - Waikato
- 21 TOP certification day - Waikato
- 30 Good Friday – Office closed
- 31 RAS Rural Ambassador entries close
- 31 Semen Buy-out closes
- 31 World Wide Sires Photo Competition closes

## April 2018

- 2 Easter Monday – Office closed
- 9 Kohitiata Jersey Sale - Dannevirke
- 20 Beledene Complete Dispersal Sale
- 26 Jersey Power Sale –Te Awamutu
- 30 Holly Geck & Marcus Trotter Youth - Entries close

## May 2018

- 1 Waikato Valley Jersey Sale – Taupiri
- 4 Carnmor Jersey Sale – Kihikihi
- 8 Remits & Notices of motion

## May 2018

- 9 Board meeting
- 22 Merrifield Jersey Sale - Manawatu
- 25 Jersey Annual Report mailed

## June 2018

- 4 Queen's Birthday – Office closed
- 6 Waiteitei Dispersal Sale & Elite Northern Wairoa Jersey Heifer Sale
- 6 - 8 JNZ Annual Conference - Whangarei
- 8 Annual General Meeting
- 13-15 National Fieldays – Hamilton
- 23 International Conference of the World Jersey Cattle Bureau commences

## July 2018

- 1 TOP & Classification Applications open
- 18 Board meeting

## August 2018

- 31 Herd Book / applications for registration close

## September 2018

- 1 TOP & Classification Applications close

### Jersey NZ Polo Shirt

(Women sizes: 8-24; Men sizes: S - 3XL, 5XL)

**\$55.00** inc GST



### Jersey NZ Youth Polo shirt

(Sizes: 4-16 children) & (Sizes up to 2XL)

**\$55.00** inc GST



## Once a Day and Jerseys – a true success story

by Pam Goodin

**Matthew and Emma Darke are true Jersey converts! Their reasons for converting to the Jersey breed incorporate all of the reasons why Jersey NZ believes that Jersey is the best option for the New Zealand dairy farmer.**

Farming in Aria, about 30 minutes drive south of Te Kuiti, Matthew and Emma are third generation farmers on the family block along with their children Will (11), Greta (10), Tilly (8) and Monty (7). They are convinced that Jersey is the ideal breed for them:

- Jerseys are the breed of choice for Once a Day
- Jerseys are the most efficient converters of feed
- The fertility and calving ease of the Jerseys is superior
- The superior temperament of Jerseys makes them easier to work with
- Jerseys deal well with extremes of temperature
- More Jerseys tend to test A2A2, and almost all of the top Jersey bulls are A2A2
- Jerseys are better on their rolling hill country than a larger cow

The original farm has been in the family since 1939, and Matthew's father Peter can recall his own father milking Jerseys up to the mid 1950's. For the next 65 years the farm was sheep and beef. As a youngster Matthew went contract milking on leaving school, and then went shearing around the world for the next 15 years. Returning home to the family farm, Matthew and his parents Peter and Elizabeth realised the need to diversify to support both families. Initially building a small shed they milked 100 cows and reared 1500 calves per annum for a few years. The cows were leased out for the balance of the season. Looking around, they realised that dairy farming was where the profit was at at that time, and in their last year of calf rearing also reared 300 heifer calves to help start their dairy herd.

Add a couple of noughts onto the farm debt, and the conversion was made to dairy 10 years ago. Initially planning to milk 450 cows, the sheep were quickly discarded and the herd increased to 900 cows on the original family block of 365 ha. Four years ago the neighbouring 135 ha property became available and was purchased, increasing the total land area to 500 ha. Now milked on two farms in two herds, each block is around 260 ha effective and supports 625 cows.

An average farm with average infrastructure, the new (upper) block had previously supported a crossbred herd that produced 90,000 kg MS in the year purchased, with a farm record of 103,000 kg MS.



Matthew & Emma Darke

In their first year of operation with a predominantly Jersey herd on Once a Day, Matthew and Emma averaged 115,000 kg MS. This season has seen a change, with the two herds and farms split into equal land and herd sizes with 450 cows in each herd. On the lower (original) block, the longest walk to the shed was 4km, but that paddock was only 2 km from the upper block's shed so it made sense to change it up. Last year the upper block where Matthew and Emma live averaged 850 kg MS per ha, 330 kg MS per cow in 250 days from the predominantly Jersey herd. The lower block produced 750 kg MS per ha on hillier country from a mainly crossbred herd.

Having been stud sheep breeders the Darkes thought they understood cross breeding and went after the three way cross which had been very successful for them with sheep. However, the fluctuations in size made them too big for the land. There were quite a few Friesian cross and Jerseys in the initial animals purchased, and they were pushed to go crossbred. But the Jerseys on the farm were just flourishing and stood out from the others in a way that convinced Matthew and Emma that they were the ideal breed for the conditions.

Initially, they took a fair bit of ribbing from their neighbours. Not only were they converting to dairy – but with Jerseys on Once a Day! These days, many of the local dairy farms are using once a day in their systems, following the example set by Matthew and Emma. They credit Malcolm Ellis with helping to convince them to believe in Jerseys. They have also been actively involved in a Once a Day discussion group based at Massey started by Colin Holmes who saw Once a Day as the future for dairy farming in New Zealand.

---

Mathew comments that as they weren't 'proper' dairy farmers in those earlier days, they were not so set in their ways and often prepared to try new concepts on farm.

They weighed the cows, and their 400 kg Jerseys cows were averaging 330 kg MS per cow making them the most efficient converters of feed (82.5% of liveweight). At other discussion groups they attended, the averages were 360 kg MS from 460 kg cows, with extra feed being required for maintenance.

The Once a Day system suits both their lifestyle and the farm. The contour of the land, and the infrastructure of the two blocks don't support twice a day milking without significant capital outlay. Their system is designed to be simple. Everyone is more content – the herd is in no rush to get back to the paddock and often sit when they get there. The family gets to spend more time together, with family breakfast every day before school and work. Matthew and Emma hope that this lifestyle will encourage the children to remain in farming. It is also easier to employ & retain staff locally. Matthew's father Peter still works fulltime as 'weed specialist & musterer' and young stock manager.

Emma rears the calves on the upper block, while a staff member rears the calves on the lower block. There are two milkers at each farm, plus a Herd Manager on the lower block under Matt's supervision. In each shed, a designated staff member is in charge of the cows at the shed and record keeping etc. Contractors are used for some of the large jobs such as cropping and silage.

Their ideal cow? For their Once a Day system Matthew & Emma are looking for a cow that matches or beats her liveweight in production with over 10% milksolids on test. She needs to have great capacity, big rumen and a big heart with good feet and legs, a big gut and a wide mouth. A good strong fore udder and udder attachment are vital for the Once a Day cow, and the will to milk.

Matthew comments that most good twice a day cows will work on once a day, but it is very rare for a poor twice a day to be successful under the Once a Day system. Just starting to really pinpoint exactly what they need, J12 & over is ideal and they are not looking for anything too fine in the bone, with Jerseys maturing quickly they want solid cows that are not too tall.



Some of the Jersey cows in the herd



## Once a Day and Jerseys – a true success story - continued

For Matthew & Emma, Jerseys meet so many of their aims for their herd. They deal really well with the heat in summer, eating while the crossbreds pant. The fertility rate is considerably better, and in a normal year there are no pre-mate heat checks required. Matthew does admit that an outbreak of salmonella this year has knocked the cows a bit, and they did metricheck this year. No CDRs are used, the cows getting an estroprotect sticker the day before mating starts and away they go. Cows on Once a Day tend to cycle hard & fast, in Matthews experience. They also use a teaser to push the conception rates, allowing them to more actively identify cycling cows and also encouraging the cows to cycle. They AB for six weeks, then the bulls go out for three weeks. This season once the bulls were out they used some short gestation to tidy up the herd. Due to the salmonella outbreak they will have to concentrate on getting the calving spread back into shape next season. Losing 15 cows to the outbreak, and having to vaccinate the rest of the herd in the middle of mating has affected the herd, and this seasons in calf rates are 10.5% on the upper block and 6% on the lower.

Both herds are now actively mated to Jersey, with the exception of one crossbred bull (approx. 150 straws). The lower 10 -15% get a beef straw. Emma actively mates each cow and selects bulls based on their breeding values, matching the requirements of each dam. They are using the elite LIC and CRV Ambreed bulls, and more recently some overseas bulls from Genetic Enterprises to address a slight issue with inbreeding. Coming from a stud breeding background, Matthew comments that 'bull of the day' is not for them, and they can improve the herd more quickly by nominating semen.

Heifers are grazed off the farm, coming back just before calving, and 250 cows across both herds are wintered off. The cows are fed 350 kg per cow palm kernel in spring and summer. They grow 25 ha of maize and 12 ha of summer turnips on the farm. They always work on 100 days of supplement if required for a drought. If the drought doesn't eventuate they will feed the turnips and save the rest for next year. The two farms grow on average 11 tonne grass per ha per annum, so that supplement is required.

This season has seen a hard spring followed by five weeks without rain. With the rain now here, the grass is bolting. The season has been cat & mouse with the previous season in terms of production, currently behind 0.5% (2000 kg MS), they are well into catch up mode and expect to match last years production of 406,000 kg MS, just 1% off the best season. Their production goal is to produce 400,000 kg MS with on farm costs of \$3.25 per MS, taking advantage of the Once a Day premium.



Starting the season with 50 cows more than required usually sees a few cows culled by Christmas. Cows are culled on milksolids, health traits and sometimes udders. Rearing 25% replacements with an empty rate of 7-8% usually means that they can constantly be getting rid of the bottom of the herd. There may also be a few heifers culled at Christmas also, in Matthews experience with Once a Day, a heifer that doesn't milk in her first season will never milk.

Warned that somatic cell would spike on once a day, the Darkes comment that it just never happened for them. They don't need to select bulls on SCC breeding values, and they only ever selectively dry cow those cows that have had mastitis (around 25%). Their herd average cell count is around 120,000.

The question had to be asked – what about those traits that farmers don't like about Jerseys? The calves do take a little longer to start drinking, but employing staff with empathy makes a huge difference. Looking for a cow that will milk rather than rearing beef, the Darkes and their staff are prepared to put in that little extra effort to get a great cow. The health treatments and vaccinations used to give the calves the best start means that they find very little size difference between their Jersey and crossbred calves at weaning. The lower bobby price or perceived lack of market interest in Jersey calves is also not an issue for them. They realise that what they may gain in rearing calves of other breeds is lost at the other end of the cycle in the maintenance requirements of those cows. The ease of calving of Jerseys also plays a large part in this equation.

Where to next for Matthew & Emma? Having become involved in the local Te Awamutu Jersey Club, they are starting to ask that question of local breeders, looking to build strong cow families for a once a day system. With Fonterra's recent announcement around investment in A2, they are now also seriously considering testing all of he cows and putting all the A2 cows onto one farm.

Matthew & Emma are really enjoying the breeding side of farming Jerseys and are keen to learn more and develop their herd for the ideal Once a Day cow.

# MIRODALE JERSEYS

Herd BW 95/43 PW 128/63 Ancestry 98%

DUE TO AN EXCITING CHANGE IN FARMING POLICY HERD HAS BEEN PENCILLED IN FOR COMPLETE DISPERSAL ON 4TH OCTOBER 2018 OR SYNCHRONIZED 4TH OCTOBER 2019.

APPROX 120 JERSEY / JERSEY X INMILK COWS AND COMPLETE LINE OF YEARLINGS AND CALVES.

SELLING AGENTS FARMSOURCE LIVESTOCK KELLY HIGGINS (as agent) Ph: 027 600 2374

COWS FOR SALE are from a rare system 1 FARMING PRODUCTION SYSTEM in NZ (these days) which will include;

- NTGG-11-85 (Rayham Ozark dtr) BW: 80 PW: 275
- Mirodale Merliness S2J (Hillstar Lot Jester S3J) BW:133 PW:222 LW:195
- Pastime 13-24 S2J (Pampas Golden Mario DOB 1/8/1967) BW:19 PW:153
- Plus a wide selection of Jersey Genetics sired by Manzello/Judds Admiral/ Carnmor Murmurs Firey
- Cows incalf this season to Triplestar/Manzello/Konui Glen Andy.

Some cows were sold to T.P Payton - South Island this season and three quality cows to "Greenleaf Jerseys" including Lexine 10-87 (Haywards TGM Aim S3J) BW: 116 PW: 180 plus cattle to "NoBull Jerseys". I wish you all every success.



AR(Russell)Thomson

"MIRODALE JERSEYS"

PH: 027 600 2959

jersey<sup>NZ</sup>

## SCHOLARSHIP FUND ROLL OF HONOUR

1992 Te Awamutu Jersey Club  
1994 Matamata Jersey Club  
1995 A W & E E Miers  
1997 R A & E M Black  
1998 Ward 5 AGM & Conference Committee  
1999 Wairarapa Jersey Club  
2000 North Taranaki Jersey Club  
2001 Nelson / Golden Bay Jersey Club  
2001 Matamata Jersey Club  
2001 Lower Waikato Jersey Club

2002 Jersey Marketing Service Ltd  
2002 D E & F S Black  
2002 Manawatu Jersey Club  
2004 T W & G Y Sneddon  
2004 Whangarei Jersey Club  
2005 Dannevirke Jersey Club  
2007 AW Harnett Ltd  
2010 North Taranaki Jersey Club  
2010 RE & JC Gibson

JERSEY NZ THANKS YOU FOR YOUR CONTRIBUTION TO THIS FUND.

# JERSEY SEMEN AVAILABLE



THE JERSEY COW OUTPERFORMS ALL BREEDS ON A PER HECTARE BASIS

*Every dairy farmer deserves the best cows and the LIC and Jersey NZ Future programme delivers:*

- Great value Jersey semen with high fertility genetics
- Efficient and sustainable dairy cows
- Quality milk with high prevalence of A2A2
- Easy calving, with quality udders
- Genetic Diversity within the team

LOOK OUT FOR THE JERSEY FUTURE  
CATALOGUE IN YOUR MAILBOX SHORTLY

**jersey**<sup>NZ</sup>  
FUTURE



  
**EASY  
CALVING**  
SUITABLE FOR  
YEARLINGS



**QUALITY  
GENETICS**

For more information call 07 856 0731 or visit [www.jersey.org.nz](http://www.jersey.org.nz)



# Jersey Future – Your Future

## 2018 Jersey Future Team

<b>BULL NAME</b>	<b>LYNBROOK ZAGA TASMAN - gBW 134/62</b>	<b>318062</b>
<b>BREEDER</b>	Lynbrook Farm Limited	
<b>SIRE</b>	DJ ZAGA	311555
<b>DAM</b>	Lynbrook Deg Trick ET Ex2, 8-8	DQBT-14-15

<b>BULL NAME</b>	<b>GLENUI PEPPER SHAKER - gBW 213/57</b>	<b>318063</b>
<b>BREEDER</b>	Goreland Partnership	
<b>SIRE</b>	ROMA DEGREE PEPPER	315023
<b>DAM</b>	Glenui Integrity Shanty Ex2, 8-9	DTJJ-13-155

<b>BULL NAME</b>	<b>FOXTON ZAGA CLASSIFIED-ET - gBW 195/69</b>	<b>318064</b>
<b>BREEDER</b>	Huzziff Farms Ltd	
<b>SIRE</b>	DJ ZAGA	311555
<b>DAM</b>	Foxtton Clare S3J VG3, 7-7	BYFK-15-4

<b>BULL NAME</b>	<b>EBBONI KING DEMPSEY - gBW 208/65</b>	<b>318065</b>
<b>BREEDER</b>	Ebboni Trust	
<b>SIRE</b>	ROMA MURMUR KINGPIN S3J	312501
<b>DAM</b>	Ebboni LT Demelza VG2, 7-8	KPHV-14-2

<b>BULL NAME</b>	<b>LITTLE RIVER OI SAMURAI - gBW 235/65</b>	<b>318066</b>
<b>BREEDER</b>	PJ AG Limited	
<b>SIRE</b>	OKURA LT INTEGRITY	311013
<b>DAM</b>	Little River Geni Shilo VG2, 7-7	DYKB-11-32

<b>BULL NAME</b>	<b>CARATACUS ZAGA DJANGO-ET - gBW 127/61</b>	<b>318067</b>
<b>BREEDER</b>	M C & C L Newson Limited	
<b>SIRE</b>	DJ ZAGA	311555
<b>DAM</b>	Caratacus Ascent Disco ET VG2, 7-8	PCTG-15-8



## TAKE YOUR MANAGEMENT TO THE NEXT LEVEL!

**'You can't manage what you don't know.'**

Use the **smaXtec smart sensor bolus system** to enhance profits:

- Reduce animal losses or wastage
- Improve reproduction performance
- Cost effective, easily administered – no hassle to you or the cow
- Optimise feed to milk



pH



Call us 

www.smartfarmdata.com  
Call Elizabeth M: 027 254 3737  
salesmanager@smartfarmdata.com

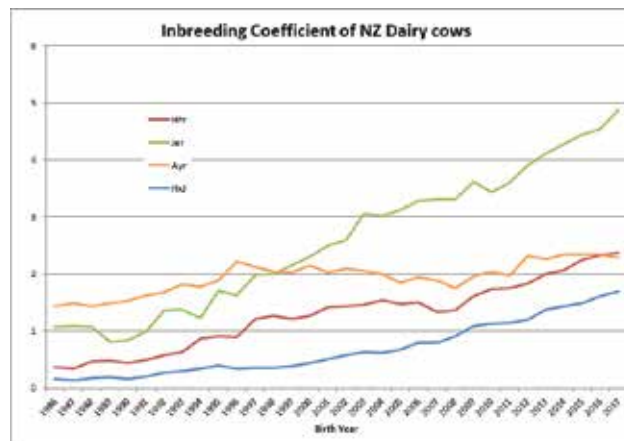


**SMART  
FARM  
DATA**

## Genetic gain is a fundamental driver for the success and sustainability of Jerseys in New Zealand.

The Jersey Breed has enjoyed significant genetic gain over recent years, highlighted by Jersey bulls occupying 48% of February 2018's RAS List, across 'top-30 all breeds.'

However the diversity in breed's genepool is of concern, in that it is gradually diminishing. For example: The top-10 RAS list Jersey now average 6% inbreeding.



The **2018** Jersey Future team includes three young bulls sired by the NZ-proven Danish sire 311555 DJ Zaga. Zaga is positive for fertility; components; udders, and; management traits. He also offers new bloodlines: The three Zaga sons average just 1% inbreeding.



DJ Zaga



DJ Zaga daughter - Tahau Zaga Nica

The three high-indexed Jersey Future bulls sired by Okura LT Integrity, Roma Degree Pepper, and Roma Murmur Kingpin, rank highly among the 2018 intake bulls and nicely complement the other three Zaga bulls.

The bull dams are all high performers, with very good conformation, coming from strong maternal lines.

Jersey Future thanks those breeders who have supported this initiative and encourages **all** members to support this programme. Jersey Future is required to sell and inseminate 550 straws from each selected bull. Thanks to those members who purchased the Jersey Future semen sales reached 550 per bull, however inseminations fell below the requirement. Jersey Future needs your support in order to fully embrace the opportunities offered to Jersey NZ breeders to the benefit of the Jersey breed.

To all breeders who will have Jersey Future calves on the ground next spring, please ensure you record and rear all Jersey Future heifer calves. Remember our commitment: 70 milking daughters across 35 herds.

We ask that breeders assist Jersey Future to identify outstanding, genetically-diverse females for possible use as bull dams for the 2019 team.

Send details of top quality genetically diverse females to Jersey NZ with note: **Diverse Females**.

Expect to see our Jersey Future catalogue in March 2018, and please keep space for Jersey Future semen in your breeding programme.

Be the first to milk quality offspring from these bull while investing in **your future**.

# Breeding Worth – Annual update to economic values

contributed by Melissa Stephen, Genetic Evaluation Developer, NZAEL

**Breeding Worth (BW) ranks bulls and cows on their expected ability to breed profitable and efficient replacement heifers.**

The BW of an animal is calculated using two key components, Breeding Values (BVs) and Economic Values (EVs). Breeding values are an estimation of an animal's genetic merit for a certain trait, and economic values are the additional profit that an increase in that trait will generate.

Economic values account for historical, current and forecast milk prices, income from culls, surplus cows and bobbies, the cost of generating replacements, and general dairy farm expenses.

Economic values are updated every year to reflect changes in these values, ensuring Breeding Worth remains relevant in an ever-changing market environment.

This will result in a higher economic value for fat, and a lower value for protein following the February 2018 update.

## Value Component Ratio (VCR) method adjustment

The method of calculating the VCR has been modified. The VCR value previously used was a five year rolling average of the Fonterra supplied VCR, going forward this will become a three year rolling average. The VCR supplied by Fonterra is a three year average in its own right, therefore this change aligns the VCR data with the appropriate milk price.

## Liveweight economic value review

Several potential improvements to the liveweight economic value have been identified during this update. NZAEL will review these in 2018 and aim to implement in the 2019 economic value update.

## How will this impact the BW of AE enrolled bulls?

On average, Ayrshire sires will decrease by the most, with an average shift of (-) \$6.8. Friesian, Cross, and Jersey bulls have shifts of (-) \$0.2, (+) \$4.9 and (+) \$4 respectively.

Of the bulls born after the year 2000, and with a Breeding Worth Reliability of greater than 75% the majority will move no more than plus or minus \$10.

For more information, visit the DairyNZ website [www.dairynz.co.nz/economic-values](http://www.dairynz.co.nz/economic-values)

Effective emphasis on the individual traits within Breeding Worth



## February 2018: Economic Value Update

The economic values for milk fat and milk protein have moved the most during this update. This is due to changes in the value component ratio (VCR). The economic values for milk volume, liveweight, fertility, somatic cell score, residual survival, and body condition score have experienced relatively small shifts.

## Economic value for milk protein will decrease, economic value for milk fat will increase

The economic values for milk fat and milk protein are calculated by partitioning the milk price into a value for fat and protein, and then accounting for the cost of producing each component.

The value of fat relative to protein has been increasing for the past three seasons, and this trend is forecasted to continue in 2017/18 season.



# Top 30 Jersey Bulls on RAS list

The following list ranks Jersey bulls for BW using the Animal Evaluation run of 17 February 2018

BULL CODE	BULL NAME	BW	FAT	PROTEIN	MILK	LWT	FERT	SCC	RESID	TOTAL LONG	SIRE NAME	MARKETER
314052	CRESCENT EXCELL MISTY ET	255/81	6.39	4.59	-788	-16.5	4.2	-0.457	-12	445	MARSDEN NN EXCELL ET	LIC
313019	CRESCENT OLM VINDICATE ET	233/98	5.62	4.23	-411	-47.2	4.8	-0.37	102	449	OKURA LIKA MURMUR S3J	LIC
314022	LINAN INTEGRITY WINSTON	233/87	5.46	4.10	-96	-75.3	-1	0.289	69	342	OKURA LT INTEGRITY	LIC
314049	COOMBES MANZ CHIEF ET	230/83	6.05	4.40	-410	-16.7	3.3	0.262	-143	245	PUKEROA TGM MANZELLO	LIC
312034	OKURA GOLDIE INDEX	228/85	5.48	4.01	-14	-69.7	-2.4	-0.255	-153	188	PUHIPUHI CAPS GOLDIE S3J	LIC
313006	KAIMATARAU INDY GOLLUM	226/82	5.78	4.39	-729	-76.8	4.3	-0.515	132	419	UPLAND PARK TS INDY S3J	LIC
314015	TIRONUI OI BRICE ET	224/83	5.56	4.09	-118	-60.3	1	-0.201	-278	111	OKURA LT INTEGRITY	LIC
312047	ARRIETA TERRIFIC DESI ET	223/86	6.31	4.59	-876	-49.5	6	-0.52	-130	225	LYNBROOK TERRIFIC ET S3J	LIC
313516	BRAEDENE PAS TRIPLESTAR	223/81	5.83	4.36	-405	-47.3	-0.2	0.16	-85	243	PUKETAWA AD SUPERSTITION	CRV Ambreed
311013	OKURA LT INTEGRITY	222/99	5.93	4.24	-461	-50.9	1	-0.057	-39	314	LYNBROOK TERRIFIC ET S3J	LIC
313046	OKURA OLM KAINO ET	222/98	5.43	4.07	-334	-71.1	5.3	-0.424	-22	350	OKURA LIKA MURMUR S3J	LIC
314010	FREYDAN OI BARAK ET	221/82	5.27	4.16	-245	-85.1	1.6	-0.303	-73	235	OKURA LT INTEGRITY	LIC
313047	EVLEEN INTEGRITY LARSON	220/98	5.35	4.07	51	-20.8	-0.1	-0.358	-74	301	OKURA LT INTEGRITY	LIC
314011	KAITAKA OI LEROY ET	219/82	5.50	4.17	-202	-76.4	-3.1	-0.067	61	278	OKURA LT INTEGRITY	LIC
314515	PUKETAWA KING CARRICK JG	213/80	5.68	4.26	-411	-36.1	3.8	-0.444	5	331	ROMA MURMUR KINGPIN S3J	CRV Ambreed
313563	CRESCENT OLM LEX	212/83	5.24	4.19	-366	-65.9	2.5	-0.525	203	459	OKURA LIKA MURMUR S3J	CRV Ambreed
314502	GLEN LEITH DEGREE OMNIBUS	211/77	5.44	4.03	-7	-25.2	1.7	-0.004	-30	326	ARRIETA NN DEGREE ET	CRV Ambreed
313023	CRESCENT EXCELL MONOPOLY	210/83	6.31	4.50	-742	-49	0.4	-0.181	-43	233	MARSDEN NN EXCELL ET	LIC
314004	BELLS OI FLOYD S3J	210/91	5.51	4.08	-62	-4.5	-0.7	-0.282	48	413	OKURA LT INTEGRITY	LIC
314050	GLANTON JINGO BERLIN	208/82	5.43	4.13	1	-67.3	-4.2	0.076	-144	88	TE ARANGA PCG JINGO	LIC
313016	BONACORD MURMUR BOLT	208/98	5.58	4.12	-391	-73	3.1	-0.574	24	295	OKURA LIKA MURMUR S3J	LIC
313045	OKURA 5-STAR INNES	208/85	5.30	4.24	-392	-72.4	-1.1	-0.538	121	369	HILLSTAR TERRIFIC 5-STAR	LIC
314014	TIRONUI MANZ JONTY	207/78	6.00	4.33	-580	-52.8	2.4	-0.316	-111	205	PUKEROA TGM MANZELLO	LIC
313527	CRESCENT OLM MASTER ET	207/84	5.23	4.08	-352	-54.7	3.5	-0.527	173	507	OKURA LIKA MURMUR S3J	CRV Ambreed
313054	LOCKHART OLM JEFFREY S3J	205/82	5.47	4.15	-378	-51.6	5.4	-0.443	-68	293	OKURA LIKA MURMUR S3J	LIC
314516	RIVERINA RONALDO CHAMP	203/77	5.70	4.33	-464	-70	-2.2	0.064	-83	190	KERSTENS KRC RONALDO	CRV Ambreed
313002	SHELBY JIVE LEIGHTON ET	202/87	5.39	4.09	-313	-63	1.3	-0.879	56	326	TE ARANGA HTA JIVE	LIC
314809	ASHVALE ING SPIRIT S2J ET	201/82	5.38	4.13	-303	-47.1	4.6	-0.503	-212	201	PATERANGI MURMUR INGOT ET	LG Ltd
312060	KAITAKA MURMUR LEO ET	200/96	5.62	4.27	-618	-86	2.7	-0.449	160	356	OKURA LIKA MURMUR S3J	LIC
312005	SHELBY HC LARRY S3J	200/97	5.47	3.98	-216	-69.4	4.3	-0.209	23	298	HARRGATES TM CHAMPION S2J	LIC



# New Jersey graduates to build a healthy and efficient Jersey herd

## contributed by CRV Ambreed

### CRV Ambreed's Jersey portfolio will be further strengthened in 2018

The already strong CRV Jersey portfolio will be further strengthened in 2018 by the inclusion of four new graduates – PUKETAWA KING CARRICK JG, Glen Leith Degree OMNIBUS, Riverina Ronaldo CHAMP and PUKEROA GUN WALKER JG.

CRV Ambreed global product manager grazing, Peter van Elzakker, says that the new graduates have attributes that will appeal to New Zealand Jersey farmers.

CARRICK, bred by Jim and Carolyn McBride from the Puketawa stud, is the first Roma Murmer KINGPIN S3J son to graduate and sits at the top of both the BW and NZMI rankings.

"This CRV Ambreed and Jersey NZ joint venture bull offers efficiency with superb health," says van Elzakker. "Solid production is combined with excellent fertility and low cell count. His daughters have size and capacity and are very well-liked by their owners.

"His cow family is very well regarded and CARRICK's performance is no fluke. His full brother CONNACHT has been one of CRV's bestselling InSire Jerseys and will receive a daughter proof next year."



Puketawa King Carrick JG

The second Jersey NZ joint venture bull to graduate, and a product from the successful JerseyGenome™ programme and the Pukeroa stud, is WALKER. Van Elzakker says that this exciting Leithlea GUN OF A SUN son offers tremendous solids production from slightly bigger cows with outstanding udders.



Pukeroa Gun Walker JG

"The use of his outcross sire posed some risk, but his daughters' performance has moved him away from pedigree and genomics and now offers Jersey farmers an outcross option," says van Elzakker. "Still short of the reliability to appear on the RAS list but high enough to appear in due time."

WALKER will also be part of CRV Ambreed's Facial Eczema team.

From the Glen Leith herd of Bruce and Margaret Sim, OMNIBUS is the highest Arrieta NN DEGREE ET son to graduate. "This extreme efficiency bull combines very high protein and fat kilograms with high milk yield," says van Elzakker. "With legends like MANHATTEN and DEGREE in the pedigree this will to milk should be no surprise. His daughters are big and will add stature and robustness plus udders are well attached.

OMNIBUS is an A2 sire and an addition to CRV Ambreed's LowN Sires team.

New graduate, CHAMP, is punching well above his weight, says van Elzakker. This Kerstens KRC RONALDO son, bred by Warren and Louise Berry from the Riverina Stud, offers an outcross option with index.

"Balanced production from low liveweight cows give him excellent efficiency," says van Elzakker. "His daughters are short but powerful with high body condition and lots of capacity. His udders are a real feature with excellent attachment and slightly wider rear teats. It's no surprise farmers love their CHAMP daughters."

CRV has set the bar high to produce bigger, stronger, more productive Jersey cows that have the conformation to last. These new graduates are confirmation it is well on the way to delivering on this goal.

# GENETIC ENTERPRISES

WORLD CLASS GENETICS

NZ

**Genetics**  
AUSTRALIA

**TAHBILK** and **AUSSIEGOLD** are two of Australia's best daughter proven Jersey sires and demand within Australia and Internationally has been strong. They both breed Jerseys ideally suited for Australia's gazing conditions with the power and strength capable of producing quality milk for many profitable lactations. **VALIN** blends the best of international bloodlines and is one of the most complete and balanced genomic Jersey bulls current available.



**TAHBILK - daughter**




**AUSSIEGOLD - daughter**



**King View VALIN**

CONTACT:

**0800 357 164**

 **geneticenterprises**

**[www.geneticenterprises.co.nz](http://www.geneticenterprises.co.nz)**



## Two new high ranking young Jersey bulls now available in New Zealand contributed by Genetic Enterprises

Demand for Jersey bulls available from Australia is growing in many countries, including New Zealand where their performance is gaining a great deal of positive comment based on milking daughters.

Genetics Australia's Export Manager Rob Derksen has been a regular visitor to New Zealand and said Polled Jersey AUSSIEGOLD has been one of Australia's greatest genetic exports with daughters now milking in New Zealand, South Africa, the USA and in a number of Latin American countries as well as in Australia.

"AUSSIEGOLD was a high ranking genomic bull in Australia and his pedigree and strong cow family attracted interest as did his polled status. Now with over 300 daughters milking his December '17 Australian Breeding Value [ABV] mirrors his genomic proof. He is ideally suited to the grazing conditions found in Australia, South Africa, New Zealand and in many Latin America countries. He is well above average for SCC, Daughter Fertility and daughters have tremendous width in muzzle, chest, rump as well as body depth and dairy strength. The added bonus is he is A2/A2 and has excellent semen quality so we continue to get very good reports on his ability to get cows pregnant. He really is a world class bull and I feel he can be used over many of the Jerseys and cross bred cows I have seen in New Zealand", he said.

**Two new genomic Australian Jersey bulls are now also available in New Zealand.**



VALIN – Kings View Valin 4697

VALIN - Kings View Valin 4697 [Valentino x Navara] is an exciting genomic Jersey blending the best genetics from the deep proven 'Aileen' cow family. His Dam scored VG 86 at 2 years of age and recently scored EX90 as a mature cow.

VALIN is one of the most complete and balanced production and type genomic Jersey bulls available. His Balanced Performance Index [BPI] is 250 while his Type Weighted Index [TWI] is 324 placing him in the top 1% of the breed and at 114 for both Overall Type and Mammary and A2/A2 it is of no surprise he has been in high demand since he became available.

VALENBLAST – White Star Valenblast [Valentino x Sandblast] comes directly from one of Australia's highest indexing and production herds "White Star Jerseys".

VALENBLAST balances the supreme type traits of his sire VALENTINO with generations of component focussed breeding and his December 2017 genomic breeding value ABVg reflect this by offering positive milk flow with +.24P% and +.35F%. Above average SCC and Daughter Fertility ABVs are complemented by an impressive 114 for Mammary and like VALIN his body traits and ideally suited to New Zealand's pasture based milking systems.

VALENBLAST has also been tested A2/A2.



VALENBLAST – White Star Valenblast

"The advantages of the Jersey breed are well recognised in pasture based systems and I feel the type of Jersey we are aiming to breed can offer a great deal to New Zealand Jersey Breeders. Our goal is to blend and identify the best Jersey bloodlines from around the world and develop those that work best in our low cost dairy systems."

"The increasing demand for Australian Jerseys in many countries suggest those experiencing the advantages of the Australia Jersey like what they see so our program is growing and we will continue to invest in the Jersey breed in the future", he said.

# The Game Changers

contributed by Casey Inveratiy, Bull Acquisition Manager

**The accelerating rates of genetic gain, the increasing value of milkfat, and two young bulls – 314022 Winston and 314052 Misty – are all predicted to be ‘game-changers’ this season.**

That’s fantastic news for the future of the Jersey breed.

The significant shift in the ratio of fat-to-protein is well documented, bringing increased value to the Jersey breed. Where fat values will head over the longer term is perhaps anyone’s guess, but the general consensus is that good returns are here to stay.

This February has seen the significant value-shift being officially reflected in Breeding Worth.

## How is Jersey looking on the RAS list?

LIC is proud to hold nine out of the top-10 spots on the Jersey RAS list as at February 2018: Spring 2017 delivered LIC an impressive graduation rate of new sire superstars, with almost half the RAS list consisting of new graduates.

Genetic gain is skyrocketing, and Jerseys are experiencing a clear competitive BW stronghold.

Across breeds, 16 of the top-30 places are held by Jersey bulls. This is without even taking into consideration the Jersey influence in the crossbred bulls.

**Below are examples of two exceptional graduate bulls, currently first- and third-ranked on the Jersey RAS list:**

## 314052 Crescent Excell Misty

Misty is the current number one bull across all breeds on the RAS list. This is the first time this status has been achieved by a Jersey bull since 300534 Okura Manhattan ET SJ3 in 2005

Not only is Misty clearly showing himself to be the most profitable across breeds (based on our national breeding objective), but he is achieving this by delivering on the all-important non-production traits.

At 255 BW, Mark and Diane Townshend of Ngatea have bred another winner.

In the way that contemporary bull Winston gets his BW from absolute production efficiency, Misty gets his BW to create cows that both produce a truck load of milk fat (25kg) and promise to last the distance in the herd.

He offers high fertility, high body condition score, low somatic cell counts, and balanced TOP laced with extreme capacity and great udders.

To me he is the perfect mating over Goldie Index daughters.

This is a bull that offers the dream combination of BW and larger liveweight/stature.

With 86 daughters weighed and classified, this bull is sitting comfortably at a very impressive -17kg for liveweight and -0.61 for stature.

From a diversity perspective, the absence of Manhattan in Misty’s pedigree is appealing, allowing him to be utilised far wider on Jersey cows than a number other of top Jersey bulls in the industry.



Misty daughter

### 314022 Linan Integrity Winston

At 233 BW, this bull is merely one example of how early use of Integrity as a genomic sire-of-sons has well and truly paid off.

Winston's dam is one of the premier Maunga cows in the country, who absolutely lives up to her name – 'Quality'. I had the pleasure of viewing this 10-year-old cow, and her 15-year-old Charlies Lad dam last year.

At 29kg fat and 11kg protein, daughters of Winston scream absolute productive efficiency!

If we compare bulls on the basis of kg milksolids production per kg liveweight, this bull blows the majority of the RAS list out of the water (first-equal with Glanton Jingo Berlin and Okura Goldie Index).

What is unique is that this outstanding production does not, in this case, come at the expense of udder conformation (typically production in this realm tends to come at the expense of udder conformation). Winston's udder conformation at 0.76 is second-highest on the Jersey RAS list.

No wonder he was our first new graduate to sell out during Spring 2017!

Exciting is an understatement. Big congratulations to Colin and Linda Megaw of Waitara.



Winston daughter

### What is next on the LIC horizon?

The next step on our journey within our Jersey breeding programme is maintaining our Jersey competitiveness across breeds by continuing to deliver outstanding genetic gain, but doing this in conjunction with protecting the diversity of the breed.

We are carrying out work in this space now and we look forward to working with you and Jersey NZ to ensure we sustain the excellent momentum of, and bright future for, this breed.

Stay tuned.

## WJCB YOUTH SYMPOSIUM

### Supporting Jersey Youth – APPLY NOW!



Are you aged 18 – 35? Are you Interested in attending the Youth Symposium at the World Jersey Cattle Bureau Conference in USA in June 2018? Jersey NZ invite applications from members to receive a partial subsidy to attend. To apply, forward us your CV including:

- NAME
- AGE
- WHERE YOU ARE AT IN YOUR FARMING CAREER
- YOUR ACHIEVEMENTS SO FAR
- WHY YOU FEEL YOU SHOULD BE CONSIDERED
- WHAT YOU HOPE TO LEARN AND GAIN FROM THE EXPERIENCE

Applications will be considered by a panel from the Youth Council and Youth Committee, and successful applicants will be advised by Tuesday 3 April 2018.

Applications close  
Friday 23 March 2018

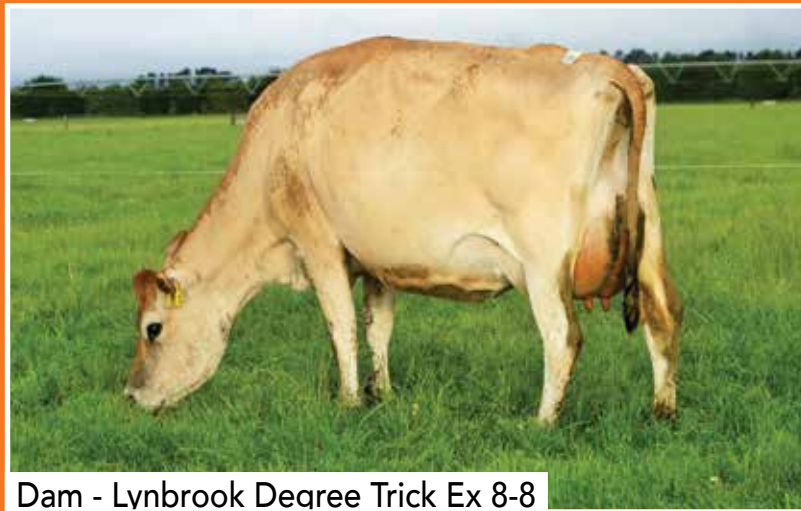


# *Lynbrook Jerseys*

We are proud to announce these two young bulls for AI!

***Lynbrook Zaga Tasman  
2018 Jersey Future team***

*Sire: DJ Zaga*



Dam - Lynbrook Degree Trick Ex 8-8

***Lynbrook Ambition -P (polled)  
Samen NZ 2018***

*Sire: Dutch Hollow Oliver -P*



Dam: Lynbrook TFC Ambition Ex 9-9

*Steve, Nina , Emily and Kate Ireland*

**Lynbrook Farm, Temuka**

**Phone: 03 615 5046 M: 021 214 1613**

**Email: [lynbrook@farmside.co.nz](mailto:lynbrook@farmside.co.nz)**

# Impact from Danish Sires

contributed by Craig McKimmie, Samen NZ

Danish Jersey genetics have had a profound influence within the New Zealand Jersey population. One of the most influential New Zealand Jersey bulls, Okura Manhattan (sired by Lemvig) is a good example of the impact Danish sires can make within the modern New Zealand Jersey population. Danish Jersey breeders have focused on larger framed, fertile cows with strong health traits and high lifetime production.

Inbreeding is now of growing concern for the NZ Jersey population, unlike the Holstein and Ayrshire populations, Jerseys have not had much influx of overseas genetics since the 1990's. Now our NZ Jersey has more than double the inbreeding co-efficient when compared to the other two breeds. Samen NZ has always worked to counteract this with the use of overseas outcross genetics and more recently the use of the Inter-bull selection file to select and feature bulls from around the world. Allowing us to focus on outcross, BW, along with good udders, production, frame and fertility.

Since obtaining the exclusive agency for Viking Genetics, Samen NZ is proud to feature two Danish Jersey bulls in this issue of the Jersey Focus, these are part of an extensive selection in this year's Samen NZ Breeding guide.

VJ HUZAR is the Number 1 proven Jersey bull (130 dtrs, 90% rel.) in Denmark with an outstanding 127 for udders, 114 fertility and 107 for chest width. Converting to exceptional BW of 93/43 Rel. 0.71 udder overall and 4.3 for fertility. With a much desired aAa code of 243 he will be very suited to the current NZ Jersey population.

VJ HIHL is another outstanding daughter proven Danish Jersey from Viking Genetics. (463 dtrs, 97% rel.) With an exceptional converted BW 95/46 Rel. His udder overall of .54 and fertility at 4.8 make him an outstanding outcross sire again with the desired aAa code 342.



VJ HIHL - BW 95/46

Cappa Casein: BB Beta Casein: A2A2 aAa: 342516



VJ HUZAR - BW 93/43

Cappa Casein: AB Beta Casein: A2A2 aAa: 243516



No 35582-6243 Huzar Daughter



# 2017 ANNUAL AGM & CONFERENCE, WHANGAREI

**6 – 8 JUNE 2018**  
**DISTINCTION HOTEL**  
**WHANGAREI**



**Jersey NZ welcomes all members to the 2018 Annual Conference at Distinction Hotel, Whangarei 6–8 June 2018.**

The 2018 AGM & Conference will be in Northland; based at The Distinction Hotel in Whangarei.

The main conference will be from 6 to 8 June. We have added on post tour day on Saturday 9 June which will be a full day visit to a local Iwi farm- Rangihamama Dairy Conversion; 278 hectares of converted Maori-owned land that Bruce Cuthforth is a Dairy Expert Trustee.

This year the conference is being organised by a committee made up of members from around the country and staff from the Jersey NZ office. We are busy getting some great speakers and entertainment organised for you. We are also planning to have herd visits on the Thursday afternoon before the Jersey Pride Sale and Youth/Jersey NZ auctions.

*Please see below outline of proposed itinerary.*

## Jersey NZ Conference 2018 – Proposed Itinerary

### **DAY ONE - Wednesday 6 June**

3.00pm Registrations  
6.00 pm Meet & greet  
7.00 pm Awards Dinner - Jersey No 1

### **DAY TWO – Thursday 7 June**

7.30am: Breakfast with keynote speaker John Wilson, Fonterra  
9am - 10am: Speaker - Dr. Dorian Garrick, Animal Breeding & Genetics  
10am - 10.30am: Morning Tea  
10.30 - 11.30am: Workshop session - Choose 1 session from 2 options:  
John Vosper 'Jersey Girls' / Dr Joe McGrath "Technical Manager Ruminants"  
12pm - 1.30pm: Lunch – Greenlea meats workshop with BBQ lunch  
2pm: Depart for herd visits  
5.30pm: Jersey Pride Sale sponsored by LIC  
7.30pm: Dinner and Youth/Jersey NZ Auctions

### **DAY THREE – Friday 8 June**

9.30am: Annual General Meeting  
11.00am: Morning Tea  
1.00 -2.00pm: Lunch  
2.30pm AGM continues if required or free time  
6.00 pm Dinner & Dance; OP Shop Ball - Sustainability

### **Saturday 9th June**

Extra- full day visit to local Iwi Farm

**"JERSEY"**  
**More than a pretty face**





# Protecting your farm from Mycoplasma Bovis

contributed by Tim Mackle, DairyNZ Chief Executive

**Many of you may remember last July, when Mycoplasma bovis, a small bacteria, was discovered in cows in the South Island.**

Since then over a dozen more positive results have been found, and MPI and the milk companies have begun a process to bulk milk test as part of the investigation to discover if it has spread any further.

Based on what we know at the moment I still believe that we can contain this disease – and that it will be simple actions on farm that will determine the future of this disease in New Zealand.

Basic biosecurity practices really can protect your animals from M. bovis. The main way the disease spreads is by animal-to-animal contact and that is where we all need to focus our efforts.

Limiting contact between your animals and outside stock, and being careful about stock movements may make all the difference.

## Four simple steps

*We recommend four simple steps to protect your animals and other farms from M. bovis.*

- Check boundary fences are secure, to reduce the risk of stock getting between properties.
- Put in double fencing at least two metres apart to stop nose-to-nose contact with the neighbour's stock. Permanent is best but, in the short-term, put a reel of tape up when stock will be in the paddock adjacent to the neighbour's.
- Always complete your NAIT records and make sure all movements in the last month are correctly recorded. Knowing where your cows have been is crucial to understanding and preventing the spread of disease.

- Get your hands on some information. Complete the biosecurity checklist at [www.dairynz.co.nz/biosecurity](http://www.dairynz.co.nz/biosecurity). The checklist's simple actions will get you a long way to protecting your farm. A Biosecurity WOF is also available, which DairyNZ developed with farmers and veterinarians. For the best results, work through it with your veterinarian. More M. Bovis and biosecurity resources are available at [dairynz.co.nz/mbovis](http://dairynz.co.nz/mbovis).

DairyNZ is also in the regions helping farmers – teams are holding discussion groups, are available to talk anytime and, if you're worried, can put you in touch with the right people to help.

While M. Bovis is an animal disease, it also has a big impact on people, as this is a tough time for farmers directly affected so we need to get behind them and work together to get on top of this disease.

We are still hopeful that M. bovis can be controlled and ultimately eradicated from New Zealand. But to do so, everyone who works with cattle in New Zealand has a part to play in helping respond.

*Don't hesitate to get in touch with your local DairyNZ team or call 0800 4 DairyNZ (0800 4 324 7969) if you need help or support.*

# Follow up on Jersey NZ animals at Massey University

Contributed by Glenys Ellison – Jersey NZ Director

In 2013 the following Jersey NZ members donated a total of 40 Jersey cows to Massey University Project Dairy1: Gray & Marilyn Baldwin; John & Thelma Bailey (2); Luke & Lyna Beehre; Michael & Susanna Booth; Paul & Dianna Capes; Brian & Shirley & Ross & Karina Carter; Ray & Laureen & Ian Colebrook; Graeme Collins; Rodney & Jocelyn & Mark Dobson (2); Russell & Alison Gibb; Richard & Joy Gibson; Des Hickey(2); Philip & Susan Ingram; Steve & Nina Ireland; Bruce & Bronwyn Jensen(2); Wayne & Ruth Johnstone; Tony & Lesley Landers; Peter & Christine Lansdaal(2); Graham & Lynley Lawrey; Colin & Linda Megaw; Daniel & Freya Lynch; Trent & Judy Paterson(2); Maurice & Lorraine & Lindsey & Clare Pedley; Dick & Faye Post; Ross & Esmae, Nigel & Juliette Riddell; Andrew & Lisa Shaw; Steve & Wendy Skelton; Tim & Gayle Sneddon(2); Toby & Rebecca Sneddon; Brett Thompson; Mark & Dianne Townshend(2); Andy & Nicki Walford.

The 2013 calving outcome for their first calving at Massey1 was 16 keeper heifer calves, 17 bull bobbies, two bulls died, two heifers died and three heifer bobbies (presumably natural mate progeny). The November 2017 herd test data showed 12 of the first 16 keeper heifers were still in the Massey1 herd. Jersey NZ records showed in the 2014 season eight heifer replacements were born from the donated cows of which three were in the herd at the November 2017 herd test. Five male replacements were kept.

In 2015 there were seven heifer keepers from donated cows with six of these present at the November 2017 herd test. Records from 2016 identified five heifer and two bull keepers. In 2017 five heifers and one bull progeny were recorded from the original cows donated. As of November 2017 herd test, seven of the original donated cows were still in the Massey1 herd along with several of their offspring.

At the start of the 2013/2014 season Massey Dairy1 had 240 cows on an effective area of 120 Ha. My contact from Massey1 reported in December 2017 that since spring 2013 the Massey1 herd has increased to about 260 cows. Initially the aim had been to have even breed numbers of approximately 80 cows of each breed or cross. Jersey cows have always been the smaller numbered breed group but with the large number donated from Jersey NZ, some purchases and natural replacements, Jersey numbers have slowly increased.

At December 2017 the herd split was Holstein-Friesian 62, Crossbred 131, and Jersey 58. They have twenty 2016 born Jersey heifers and seventeen 2017 born Jersey heifer calves. A small number of Jersey bulls are also reared for heifer mating.

It is pleasing that the donated animals have made a valuable contribution to Massey1 studies and several continue to do so themselves or by their offspring entering the herd.

The September 2017 Jersey Focus (pg13) covers the findings of OAD milking of the three breeds in the Massey1 trials. Data from the first three full lactation seasons demonstrated that all breeds had the same average lactation length of 245-246 days. For milk yield and liveweight, Jersey cows were the lowest, Crossbred cows were intermediate and Holstein-Friesian cows were the highest.

When milksolids production per kilogram of liveweight was calculated, the Jerseys and Crossbred cows at 0.75 and 0.71 kg milksolids/kg liveweight (respectively) produced more than the Holstein-Friesian cows which produced 0.66 kg milksolids/kg liveweight. There was no difference in somatic cell count between the breeds nor cow ages and submission rates. Breeding worth was not different between Holstein-Friesians or Crossbreds, but was higher for Jerseys, while PW was greater for Jerseys and Crossbreds than Holstein-Friesians.



As well as production data, T.O.P. data was collected on these cows for the three lactation seasons. For most T.O.P. scores, such as adaptability to milking, shed temperament, milking speed, overall opinion, capacity, rump angle, legs, rear teat placement and body condition score, there was no difference between breeds. As expected Jerseys had the lowest stature and weight scores. For udder related T.O.P. scores Jersey cows had the highest front udder score and Crossbred cows the lowest. Jersey cows had the highest scores for udder support, rear udder, front teat placement and udder overall, whereas the Crossbred and Holstein-Friesian cows did not differ for these traits.

For dairy conformation, the Jersey cows scored the highest (7.16), then Holstein-Friesian cows (6.98) and Crossbreeds (6.86). Better udder conformation and lower milk volume made the Jersey cows more adaptable to the shift from TAD to OAD milking compared to Crossbred and Holstein-Friesian cows.

Differences in udder conformation has affected the culling rate among breeds in this university herd with Crossbred and Holstein-Friesian cows having a higher likelihood of being culled than Jersey cows. Cows with stronger udder support, stronger front udder and higher rear udder were more likely to be retained in the OAD milking system.

Overall there has been value in having the Jersey breed well represented in the Massey1 herd. The donation of cows by JNZ members has helped useful data to be generated. The Jersey breeds production efficiency in Kg MS per Kg BWt compared with the two other breeds and also its advantages in adapting to OAD milking have been demonstrated.

#### SOURCES

SMASH Conference 2015 Proceedings; Project Dairy1, Peter Kemp, Massey University.

Jersey FOCUS Sept 2017 Report; Nicholas Sneddon et al. Jackie Kennedy- JNZ Office, registrations & data reported. Fiona Sharland, Massey University, Herd data records.

#### SUNSHINE

Robert & Nicola Lawson  
Manawatu-Wanganui

#### THOMPSON HILL

Carmen & Josh Thompson  
Tasman

Kathryn Mears  
Southland

#### PHARLAP

Philippa Trounce  
Canterbury

#### LAKE DOWNS

Keith & Wendy Lambeth  
Waikato

#### SHERBORNE

Henry Scherer  
Waikato

#### MATUKU

Bridie Elizabeth Virbickas  
Bay of Plenty

#### PENNINE

David Noble  
Waikato

#### CHEVIOT

Gary Mitchell  
- Ribbonwood Country House  
Canterbury

Krystle Bennett & Nigel Brinkworth  
- Denham Farm Ltd  
Waikato

#### ROYDON

Bernard & Gaye Hermann  
Bay of Plenty

#### MANOR

Thomas Jeyes  
Waikato

#### PANORAMA

Emma Hewson  
Waikato



## New Member? Jersey Plus Registrations!

Are you a new member looking to get your herd registered? Then consider registering your herd through our Jersey Plus programme. The offer is available to all new members who register their herd before 31 August of the year they join (i.e. for the next Herd Book).

### This programme applies to you if you:

- Are a new member with or without a registered Studname/Prefix
- Use the automated 'Turn Your Herd On' option to register all current females J12 & over in your herd
- Use either the MINDA naming system or the default naming system and sign up to the annual standing order programme.

### Prices will be as follows:

First 100 females \$7.75 + GST

Next Over 100 females \$3.25 + GST

With additional discounts for larger groups as follows:  
(discount to apply to total account)

200 – 300 females registered additional 10% discount  
301 – 400 females registered additional 15% discount  
401 – 500 females registered additional 20% discount  
501 + females registered additional 25% discount

That is a saving of AT LEAST \$7.25 PER ANIMAL on any female animal over one year of age.

Call (07) 856 0731 or e-mail [Melissa.mgoodman@jersey.org.nz](mailto:Melissa.mgoodman@jersey.org.nz) in order to find out how to register your Jerseys and other registration options that may work best for your requirements. This offer does not apply to bull registrations, these must be processed individually.

### Why are registrations important to you?

- Your stud name is your brand. It labels your herd, genetics and achievements. Brand marketing options through the Association is increasing – think farm signs, Jersey Focus advertising, website and social media advertising; participation in joint venture programmes.
- Registered cattle give more options for how they can be marketed, on average a registered herd sells \$200-\$800 per cow above similar herds.
- Registration is a prerequisite for successful bulls in the genetics industry, most AB companies require young Jersey bulls to be registered in the Jersey Herd Book.
- Higher genetics bulls sold as service sires often attract a premium when registered.

### Why are registrations important to us?

- The primary reason is information. As part of our data access arrangements we can readily access information on the subset of registered Jerseys within the national herd. The more information we can access (i.e. the greater number of registered Jerseys), the more reliable that data is.
- Registrations generate income for Jersey NZ. It is that income that provides the resource for Jersey NZ to advocate to and work alongside industry partners on your behalf; educate Jersey and dairy farmers, and the industry, about the benefits of the Jersey breed; driving the growth of the Jersey breed.

## TOP & Judging – Educational, fun & informative

On the 17 February 2018 a small group of 15 interested individuals gathered at the Gibb farm and spent a day learning about judging and TOP classification. Barry Montgomery started the day talking about judging expectations and guidelines. The group then one by one judged an exquisite lot of Zenith Jerseys, each Judge taking the time to justify their placings to the group. The youngest of the Judges was Zara Williams age 10. Des Hickey then took the group for a walk through TOP & Classifications. This informal educational day was fun, challenging, informative and supportive of the wide range of skills of those who attended. It was great to see Jersey NZ members, you and old, turning up and showing keen interest in stock quality.



TOP & Judges training

## TOP & Classification

In 2017 Jersey NZ had the great pleasure of welcoming two new inspectors to the team. All Jersey NZ TOP & Classification inspectors are fully qualified including BCS certification. New inspectors are accompanied by a senior inspector for their first two years of TOP Classifications, this both provides a chance to learn on the go and support in the paddock.

### James Wallace:

"I wanted to become a TOP inspector so that I could learn a new skill, do a service to the industry, see different herds and most importantly meet and encounter new people that I normally wouldn't cross paths with. The people that I met and herds that I saw were in places that I normally wouldn't get a chance to. Although SPS herds are not the most exciting part of doing TOP it gave me a chance to have some good chats with the more experienced inspectors. When the herd owners/workers are interested in learning about what we are doing it make that job even more enjoyable...I thoroughly enjoyed TOP".



Inspectors at the TOP & Certification day that was held in Northland. L to R: Barry Montgomery, Katherine Tucker, Graeme Collins, Peter Gilbert & Robert Hall

Jersey NZ currently has 13 qualified TOP & BCS inspectors, 12 of whom Classified (cumulatively) 21,058 cows between September 2017 and December 2017.

### Katherine Tucker:

"I found the process of becoming an inspector quite satisfying because it showed me I am capable of knowing what a cow looks like, good or not so good. It really helped me view my own cows in a more analytical way. I enjoyed getting out to different farms and saw a huge variety of stock and went to places I wouldn't usually have a need to go to...I enjoyed doing the breeders herds the most and talking with the owners and finding out what sires the cows are by and seeing trends coming through". Jersey NZ currently has 13 qualified TOP & BCS inspectors, 12 of whom Classified (cumulatively) 21,058 cows between September 2017 and December 2018

The dates for 2018 TOP Training and Certification will be Tuesday 20th March for the training day and Wednesday 21st March for Certification. This will be held in the Waikato between Hamilton and Cambridge. If you want to attend either day please contact Melissa Goodman or Robert Hall.

### TOP Convenor:

Peter Gilbert  
glenalla@slingshot.co.nz  
027 435 6334

### TOP Co-ordinator:

Robert Hall  
8raro8@gmail.com  
(03) 348 8406

### Member Services Administrator:

Melissa Goodman  
mgoodman@jersey.org.nz  
(07) 856 0731

# Just Jerseys Ltd

**BW 111 PW 147 Rec Anc 100%**

**It has been a very big year for us.....**

We were rapt to win the 2017 Semex On Farm Challenge herd team National final for the first time with these cows

NAME	AGE	BW	PW	LW	CLASSIFICATION
Thornlea LT Trisha	2	194	263	335	7-8 VG2
Roscliff Murs Gima	3	165	158	64	8-8 Ex3
Thornlea BB Heron	4	161	312	232	9-8 Ex2
Thornlea Encore Meg	4	155	384	348	8-8 Ex4
Roscliff Mans Dreamer	5	144	300	262	8-8 Ex2
Thornlea Oregon Leonie	5	155	292	278	8-8 Ex2
Thornlea Target Trisha	6	134	231	133	8-8 Ex2
Braedene LT Maggie	6	154	250	258	8-8 Ex2

The regional results for 2018 are out, with a win in the team and with Gilda and Dolly in the individual finals

NAME	AGE	BW	PW	LW	CLASSIFICATION
Thornlea SP Leonie ET	2	170	255	292	8-9 Ex2
Thornlea Speedy Sheba	3	154	153	333	9-9 Ex2
Thornlea Goas Ezzie	4	165	272	323	8-9 Ex2
Thornlea BB Heron	5	161	312	232	9-8 Ex2
Thornlea Goas Tansy	7	216	477	647	8-9 Ex2
Braedene LT Margret	7	151	233	413	8-8 Ex2

## MORE HIGHLIGHTS



**Supreme Champion Royal Show 2017**

Roscliff Ivins Gilda EX2 9-9



**Supreme Champion Agrisea Jersey Classic 2017**

Braedene Target Molly EX7 9-9

## CLASSIFICATION 2017

34 Excellent, 10 VG from a total of 44 heifers including 5 x 9-9 heifers

Average Udder Overall 7.9, Average Dairy Conformation 8.3

Young cow to watch is "Thornlea PGW Trisha" Ex2 8-8 BW 186, PW 236, LW 248 sired by hot new Jersey Genes sire "Pukeroa Guns Walker". Trisha is from the Triplestar family.



# Just Jerseys Ltd

## OTHER HIGHLIGHTS

- Heifers performing for their new owners from Jersey Power 2017
- Julz and I purchasing the remaining shares in Just Jersey
- Thomas and Ellie-May getting out there and doing it in the ring, especially Thomas efforts for the NZ Youth team in Australia at Dairy Week and the Jersey NZ Youth team at NZ Dairy Event
- No Staff!
- Losing some weight
- Quality family time (in the bush)

---

## Jersey Power 2018

Thursday April 26th at the Roscliff sales arena Te Awamutu

- Viewing animals from 2pm, Wild game banquet from 6pm, Sale time 7.30pm
- Featuring 40 incalf Rising 2 yr old performance bred heifers
- Also a select line of promising rising 1 year bulls

The sale line-up looks great, many of our best female families are represented from leading sires "Terrific, Speedway, Gun of Sun, Ruffian, Van Ahlem".

Make sure you get a catalogue and view these animals for yourself at Jersey Power.



Nigel, Julz , Thomas and Ellie-May Riddell

38 Maihihi Rd RD2, Otorohanga 3972

Phone 07 873 0770 or 0274 343 153 or email [cowshotz@farmside.co.nz](mailto:cowshotz@farmside.co.nz)

Agents: Jersey Marketing Service: Ross Riddell ph 027 211 1112

# Groundbreaking research on heifer development

Contributed by Stephen Bell-Booth

During the past 10 years Bell-Booth Ltd has invested \$M2.5 into fundamental research of our heifer development program, Queen of Calves. Jersey NZ kindly invited me to share some of the key learnings from the Company's research.

## Where did it begin?

Queen of Calves was developed to allow calves to utilise their diet more efficiently. Over the last 10 years observations from clients who have correctly followed our program include, more content calves, healthier calves, target weaning weights achieved quicker and absence of a post-weaning check. As heifers they enter the herd close to adult frame size and are more efficient milk-producers.

However these observations run counter to the wider New Zealand dairy industry. 39% of NZ heifers are not completing a 3rd lactation.

I personally think the loss of productivity through premature culling should be given as much priority as attention to waterway protection.

## Where's the evidence?

If we just compare growth rates during the milk-feeding phase, Queen of Calves grows calves faster. We asked Massey University to test it against a conventional calf diet. Over three trials; 2006, 2007<sup>1</sup> and 2014 they found calves raised on the Queen of Calves program gained an additional 71 grams of liveweight each day, during the milk-feeding phase, i.e. the birth to weaning period. The treated calves were able to convert their feed intake more efficiently; their bodies were able to utilise the given volume of milk and meal to achieve an average daily liveweight gain of 706 grams, compared to the average daily weight gain of 635 grams in the untreated calves.

Other trials have looked at effect on milk production and the direct impact of Queen of Calves on the curdling properties of milk, including an ultrasound study of milk transit through the calf's digestive system. The current work is looking at early udder tissue development.

## How does it work?

We think there are a number of mechanisms involved in the process. However research has established that by adding Queen of Calves to milk significantly slows down the milk's transit. At four weeks of age, the treated milk transits the abomasum to small intestine 31% slower<sup>2</sup> compared to milk alone.



*Stephen Bell-Booth is the CEO of Bell-Booth Limited, he lives with his wife Julie in the Manawatu. A father of three adult children and grandfather to five grandchildren, Stephen has a passion for understanding and researching heifer development.*

## A more productive herd member

There is global evidence, calves that achieve rapid growth during the milk-feeding phase produce more milk throughout their life time. DairyNZ's Principal Scientist, John Roche concurs with the evidence. He recently presented and co-authored a paper that summarised current thinking on heifer development<sup>3</sup> at a symposium of Australasian Cattle Scientists. Roche quoted experts like Khan, Soberon, Van Amburgh and Margerison. Their overwhelming view being rapid growth achieved during the milk-feeding phase is key to mammary development and milk yield<sup>4</sup>.

## Is it economic?

We asked Wellington Economics firm, BERL, to review the milk production and survival data of a treated and untreated mob of cows at Massey University's No 4 dairy. BERL found<sup>5</sup> the treated cows produced 30 kilograms additional milksolids per lactation on average, over five lactations. And interestingly, survival among the treated cows was significantly higher than the untreated peers, with 55% of the treated heifers still in the mob at the 5th lactation. While BERL's conclusions are based on limited numbers my team are particularly interested to ensure that for us to get a comprehensive understanding on the possible impact of the use of Queen of Calves and survival, we need the data from lots of cows.

### Groundbreaking?

Under research conditions, treated calves achieved greater daily liveweight gains without the addition of more fat (milk) in their diet. They truly were more efficient feed convertors. To quote a longterm user, Paterangi Jerseys, Waikato, have raised their replacements on Queen of Calves for 9 years and have recently been nominated by Dairy NZ as the New Zealand Benchmark Young Herd. Wayne Shaw has recently started mating his heifers at 12 months to achieve more days in milk. Paterangi have evidenced the research outcomes at a commercial level.

### What have I learned about research?

It's a long game! I've learned that if I'm going to play in the 'sandpit' of animal nutrition, I better bring my bucket and spade with me and wear a sunhat. By this I mean, I have had to commit money, time and patience. We have challenged the conventional dogma of heifer rearing, especially in the pre-weaning phase. Unsurprisingly, the research evidence has repeatedly supported the observations of our good, loyal customers.

In summary, attention to genetic selection has enabled New Zealand dairy farmers to breed for type, temperament and production. Feeding the young stock better enables New Zealand farmers to raise more productive and economic herd replacements. If you would like to know more about the research, I welcome your enquiry.

1. The effect of increasing nutrient and amino acid concentration of milk diets on dairy heifer individual feed intake, growth, development, and lactation performance,' by Dr Jean Margerison, Dr G.W. Reynolds and A. D. J. Robarts, was peer-reviewed and published in the Journal of Dairy Science. 96:6539-6549 <http://dx.doi.org/10.3168/jds.2012-6489>
2. K Singh, S R Leath, H V Henderson, A J Molenaar, T J Watson, D Pacheco and C D McMahon, published NZVJ Vol 64, P 288-292, September 2016
3. Heifer rearing to optimise farm profitability, by J R Roche, N A Dennis, K A MacDonald, C V C Phyn, P R America, R R White and J K Drackley, Proceedings of the 5th Australasian Dairy Science Symposium, 2014
4. Studies show greater early growth rates will encourage the immature mammary gland to develop more lactogenic (secretory) tissue which in turn results in an udder that produces milk more efficiently as an adult. (Khan et al., 2001; Bach, 2012; Soberon et al., 2012; Margerison et al., 2013)
5. Read a summary of BERL's views on the benefits of rapid, early growth through the use of Queen of Calves, <http://berl.co.nz/home/SearchForm?Search=queen+of+calves>



Paterangi Jersey cows. Photograph used with permission



# ARDACHIE POLLED JERSEYS

## “PPolled Genetics”

2017 & 18 have been very exciting at ARDACHIE for our team of homozygous (pure) PPolled A2A2/BB Kappa Casein bulls.

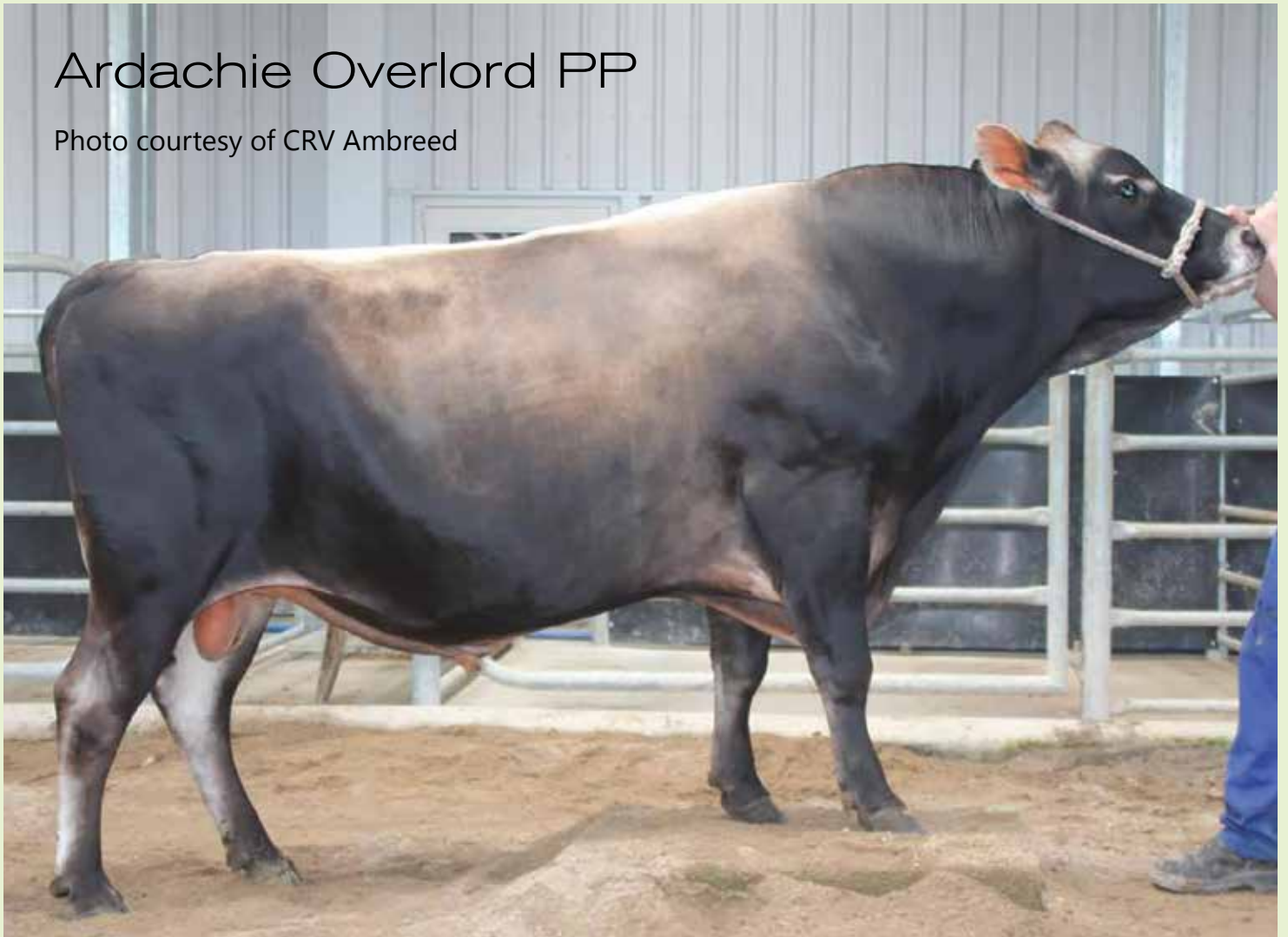
Ardachie Overlord PP has been marketed by CRV Ambreed in New Zealand & now the EU & USA. Martin Schuler is marketing Overlord PP in Switzerland & Germany. CRV Ambreed have also marketed Ardachie Dimple PP in New Zealand.

Sustainable Genetics in the US are marketing Ardachie Octane PP, Zigzag PP & Dimple PP.

Genetic Choice NZ are marketing Ardachie Octane PP.

### Ardachie Overlord PP

Photo courtesy of CRV Ambreed



**PPolled-the humane choice!**

**PPolled-natures dehorner!**

Ardachie Polled Jerseys,  
94 Smiths Rd, R.D. 1 Marton  
P: 06 322 8281 M: 021 0220 4468  
[‘FaceBook’](#) - [Ardachie Polled Jerseys](#)

# The proof is in!

contributed by Aaron Parker – CRV Ambreed Breeding Programme Manager

**CRV Ambreed is proud to partner with Jersey NZ, leading the rapid progression of the key traits required for a successful Jersey breed.**

We have set the bar high to produce bigger, stronger, more productive Jersey cows that have the conformation to last, and we are celebrating the unprecedented success of the JerseyGenome™ program.

JerseyGenome™ is a joint venture between Jersey NZ and CRV Ambreed to identify potential bull mothers. The aim is ultimately to generate sires that will enhance the future of the breed by marrying technologies such as genomic selection and embryo transfer with the skills and experience of members.

In 2013, 32 bulls were born from JerseyGenome™ females and after genomic testing, eight were selected to enter CRV Ambreed's Progeny Test program. In spring 2017 daughters of these bulls began lactating, were weighed and T.O.P scored. This measured information is used by DairyNZ to generate Breeding Values (BVs) completing the progeny test process with new proven bulls.

This season across New Zealand, close to 95 Jersey bulls received daughter (progeny) proof information for the first time, it is estimated that approximately 10 new Jersey bulls will result.

Remarkably two of these come from the JerseyGenome™ program. Both PUKETAWA KING CARRICK JG and PUKEROA GUN WALKER JG have graduated into the 2018 CRV Ambreed proven bull team.

To put this into perspective, JerseyGenome™ bulls contribute to approximately 1% of the Jersey bulls getting a proof this season with an astonishing estimated 20% representation of the new graduates this season. However, the success extends to the whole 2013 JerseyGenome™ team with seven of the eight bulls in the top half of all Jersey bulls receiving proofs this season and the teams genetic merit being a massive 22 BW points greater than expectation.

We are very excited with the addition of these two new joint venture graduates. They not only genetically enhance the Jersey offering in 2018, they also generate income for Jersey NZ. The future looks bright for the program with many more JerseyGenome™ bulls to graduate and a new group of females to enter the program over the next few months.

CRV Ambreed values the partnership with Jersey NZ and it's members, understanding success is not just based on common goals but equality, desire, and huge amount of passion.



# JerseyGenome™ – Elite heifer programme to identify potential bull mothers

## What is JerseyGenome™?

- A programme to identify and acknowledge the best pedigree Jersey breeding heifers in New Zealand.
- A joint venture to identify potential bull mothers for Jersey NZ & CRV Ambreed, to generate sires that will enhance the future of the Jersey breed.

## Benefits

- A genomic profile for each heifer tested is shared with the breeder.
- A three generation pedigree report for each heifer.
- Mating recommendation from the JerseyGenome™ working group.
- Heifer(s) receive two mating agreements over the 27 month contract and semen is supplied for those matings.
- Opportunity for Elite Status – Acknowledgment of the best performing registered Jersey heifers in the JerseyGenome™ programme.
- ET programme – Elite graduates will be placed into an ET programme. All embryo production costs are covered.
- Female progeny are automatically nominated for selection back into the first stage of the JerseyGenome™ programme.
- Selected male progeny advance to CRV Ambreed for consideration.
- Competitive royalties or graduation payment will apply to bulls graduating (either proven or Insire) from the scheme.
- Young bulls will be considered for CRV Ambreed Insire Teams.

## Terms & conditions for all heifers progressing from selection to genotyping stage:

- Owner agrees to submit a hair sample from each animal to CRV Ambreed for genotyping by a date to be confirmed.
- The owner will receive a free genomic profile per animal selected for stage two.

## Additional terms and conditions for all heifer(s) accepted into the final JerseyGenome™ Team:

- An administration fee of \$50 + gst will be payable to Jersey NZ for each heifer selected into the 2018 JerseyGenome™ Team.
- Each heifer remains on own farm for the season and completes a minimum of four (4) herd tests within her first lactation.
- The Owner/s agrees to TOP & Classify the entire two-year-old contemporary group within the herd.
- The Owner/s agree the heifer will be weighed at the start of the season OR weighing will be part of the contemporary group within the herd and will occur around the time of the TOP and Classification.
- Mating agreements will be in place for 27 MONTH matings for each heifer within the JerseyGenome™ programme.
- If any of the aforementioned conditions (B – D), are not met, the cost of genotyping may be charged back to the owner, if the owner's explanation is deemed insufficient.

## 2018 JerseyGenome™ Team:

The JerseyGenome™ working group is currently processing over 350 registered Jersey heifers from the top cow report. The breeders of these heifers will be contacted to assess their availability and the heifers will now be subjected to the JerseyGenome™ selection criteria. From this group around 150 heifers will be selected for genotyping from hair samples with the final team announced in June 2018.



# JerseyGenome™ update

## 2016 JerseyGenome™ Testing team (2015 born)

- 37 animals
- 15 members represented

The 2015 team is currently in their first lactation.

From a total of 37 animals we have 11 heifers that scored EX2 for TOP & Classification, 16 heifers that scored VG2 and 8 with GP2. Two classified G2.

All heifers that scored above the 6-6 criteria for udder overall and dairy conformation now qualify for graduation in May.

Below are tables listing top ten heifers in the current testing team based on LW and NZMI.

**TABLE ONE – LW**

NAME	OWNER	FAT BV	PRT BV	MLK BV	LWT BV	FERT BV	BW	LW	OO BV	UO BV	DC BV	NZMI
MOUNT COSY PP PEB JG	Summit Farms (Otorohanga) Ltd	42	21	389	-58	1.9	289	751	0.259	0.847	0.166	230
FYNREATH WSM CHANCE ET	Michelle Flay	25	13	-24	-44	-0.8	215	616	0.36	0.490	0.191	175
PURIRI MANZELLO DIABLO	Wilson Farms	30	9	-258	-47	2.5	246	478	0.17	0.325	0.344	171
ELLISON TERRIFIC SHELBY S3J	Roger & Glenys Ellison	18	7	-244	-53	3	232	380	0.408	1.236	0.518	206
PURIRI MAXWELL SAL	Wilson Farms	31	4	-296	-50	1.9	245	325	0.445	0.814	0.515	179
FYNREATH WSM COTTON ET	Lynbrook Farm	16	6	-314	-57	-1.9	194	294	0.357	0.556	0.188	158
MOUNT COSY SPEEDWAY HERON	Summit Farms (Otorohanga) Ltd	18	7	-44	-60	1.3	186	293	0.308	0.31	0.014	137
ASHVALE OI EYEWASH	Ashvale Jerseys Ltd	16	4	-390	-50	1.3	181	245	0.389	0.196	0.319	143
ELLISON TERRIFIC SHAST S3J	Roger & Glenys Ellison	20	4	-429	-52	3.1	224	239	0.351	1.05	0.377	179
FYNREATH CKB CRISP ET	S F & H J Fowlie	21	8	-230	-42	-3.8	172	212	0.19	0.561	0.13	125

**TABLE TWO – NZMI**

NAME	OWNER	FAT BV	PRT BV	MLK BV	LWT BV	FERT BV	BW	LW	OO BV	UO BV	DC BV	NZMI
MOUNT COSY PP PEB JG	Summit Farms (Otorohanga) Ltd	42	21	389	-58	1.9	289	751	0.259	0.847	0.166	230
ELLISON TERRIFIC SHELBY S3J	Roger & Glenys Ellison	18	7	-244	-53	3	232	380	0.408	1.236	0.518	206
ELLISON TERRIFIC SHAST S3J	Roger & Glenys Ellison	20	4	-429	-52	3.1	224	239	0.351	1.05	0.377	179
PURIRI MAXWELL SAL	Wilson Farms	31	4	-296	-50	1.9	245	325	0.445	0.814	0.515	179
FYNREATH WSM CHANCE ET	Michelle Flay	25	13	-24	-44	-0.8	215	616	0.36	0.490	0.191	175
DRUMCLOG TERRIFIC LOUISE	Ron & Shirley Hamilton	3	4	-152	-62	1.7	153	104	0.584	0.781	0.379	174
PURIRI MANZELLO DIABLO	Wilson Farms	30	9	-258	-47	2.5	246	478	0.17	0.325	0.344	171
PURIRI TERRIFIC SALLY	Wilson Farms	18	2	-379	-40	1.2	195	17	0.435	0.907	0.493	161
FREYDAN LT GOLDIE S3J	D J & F J Lynch Ltd	18	3	-312	-38	0.2	173	137	0.542	1.054	0.738	160
FYNREATH WSM COTTON ET	Lynbrook Farm	16	6	-314	-57	-1.9	194	294	0.357	0.556	0.188	158

## 2017 JerseyGenome™ Team (2016 born)

- 59 animals
- 20 Members

A total of 59 heifers are in the 2017 JerseyGenome™ team. These heifers have received a mating contract and semen has been provided at no charge to owners.

They will begin their testing year in August /September 2018.

# **COMPLETE DISPERSAL SALE**

## **TUE 17<sup>TH</sup> APRIL 2018**

**10:30am Machinery**

**11:30am Cattle**

**Top Production 457kg/ms/cow**

**Last 4 Seasons average**

**437kg/ms/cow**

**BW92, PW85 & SCC 68,633**

**"The Girls" Jerseys**

**jersey<sup>NZ</sup>**

**John and Diane Baldie**

654 Kina Road, Opunake, Taranaki

06 763 8280

To be Auctioned on Farm by PGG Wrightson

Full herd profile available on Agonline.

### **Breeding Focus**



**Big Capacity &  
Stature Cows**



**Great Udders &  
High Production**



**Good Shed Temperament &  
Plenty of Fresh Blood Lines**

**Kim Harrison**

Dairy Coordinator  
PGG Wrightson  
027 501 0013

**Craig Murray**

Livestock Representative  
PGG Wrightson  
027 322 0063

**NATIONAL TEAM.  
LOCAL KNOWLEDGE.**

# Somatic cell now included in PW

contributed by LIC

**Following a review of PW last year, LIC announced in January somatic cell would be incorporated into the PW index.**

The review was a first for PW since its introduction in 1996 and assessed what traits could be added to increase the value it delivers on-farm. It included farm trials and consultation with industry stakeholders, NZAEL, and breed societies, including Jersey NZ.

Prior to this, four traits contributed to the PW calculation – milk volume, milk fat, protein and liveweight.

However, given the direct impact somatic cell has on a cow's health, production and reproduction, somatic cell was added as a fifth trait to PW on 17 February in the Animal Evaluation (AE) run.

Rachel Bloxham, LIC animal evaluation manager, said that adding somatic cell to the PW index will help make it more relevant for today's dairy farmers.

"PW is a significant tool to lead culling decisions, to identify and retain the most valuable cows in your herd, but we know that many farms also review somatic cell data to help inform those decisions.

We want to make that secondary consideration seamless, by adding somatic cell into PW."

As per the estimation of other production traits, somatic cell data will be sourced from herd testing, but from the first three lactations only.

"PW as a whole, primarily focuses on information from the first three lactations so farmers can highlight the lifetime production potential of their younger cows, enabling them to make decisions on whether they should be retained in their herd or not," Bloxham said.

Cows who are not herd tested will have an estimated SCC PV based on ancestry information only (and heterosis effects if the animal is a crossbred). The associated reliability will be very low indicating the lack of available information.

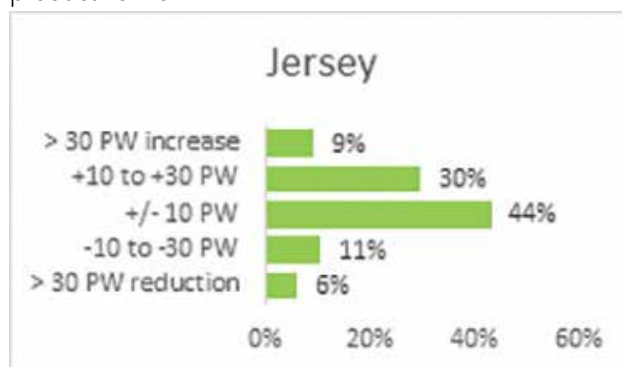
New Zealand Animal Evaluation Limited (NZAEL), a wholly owned subsidiary of DairyNZ, has agreed to provide the economic values for all PW traits including somatic cell, based on the national and industry good economic models it developed and operates.

Farmers may have seen some changes in the PW of their cows after the update, to reflect somatic cell scores from their first three lactations.

Following analysis of a subset of approximately 6330 Jersey cows in New Zealand, almost half are expected to move less than +/- \$10 PW but interestingly 30% are

expected to have an increase between \$10 PW and \$30 PW, recognising the general strength the Jersey breed has in relation to good somatic cells.

At an individual animal level, some extreme movements will be observed if high levels of Somatic Cell Counts (SCC) were recorded in the earlier years of an animal's productive life.



For example, the following table shows the estimated movement in PW and associated herd test information for a selection of 2015-born animals from the same Jersey herd. It shows animals with consistently high SCC are impacted more than animals with a one-off high SCC.

Animal	SCC Lactation 1 (000's)			Estimated PW movement
	HT 1	HT 2	HT 3	
1	7	7	13	+ \$44
2	34	22	222	+ \$11
3	120	104	72	- \$13
4	65	728	4579	- \$50
5	442	517	775	- \$56

At a herd level, the expected movement in herd PW will be less, as individual animal movements' average out. The estimated movement for a herd with predominantly Jersey cows is between \$2 PW to -\$6 PW.

Over the next 12-18 months, LIC's work on PW will continue.

"We will carry out more research into evaluating two further traits (fertility and Body Condition Score) that certainly contribute to the lifetime performance and profitability of a dairy cow and as such will add further value to PW as a management tool," Bloxham said.



# World Congress on Genetics Applied to Livestock Production visit

In mid-February, Jersey NZ had the privilege of hosting lunch for 150 delegates from a group of over 1400 International geneticists. They were part of the World Congress on Genetics Applied to Livestock Production holding its four yearly congress in New Zealand. The Congress also incorporated the annual Conferences for the International Committee for Animal Recording (ICAR) and Interbull.

Richard & Pauline Adam - Carnmor Jerseys and Wayne & Kate Shaw (Ray & Marion Shaw) - Paterangi Jerseys were their hosts for the visit with Jersey NZ sponsoring the lunches.

The host farmers gave a presentation about their herd and farm operations, and Jersey NZ representatives Pam Goodin and Alison Gibb gave a presentation on the breed and organisation at each farm respectively.

Presentations were given in the middle of a thunder & lightning storm, but this did not faze the delegates who asked some very perceptive questions. The rain cleared in time for the delegates to view the cows for a few minutes before heading on to their next destinations. This 'dairy' themed day included visits to both LIC and CRV Ambreed, along with a visit to Hobbiton.

Jersey NZ would like to acknowledge the host farmers, members of the Te Awamutu Jersey Club and Jersey NZ & DairyNZ staff who helped out at both farms on the day to make this lunch such a success.



## ALL THINGS JERSEY

- 1: Celine Pirie & Joanna Fowlie, Jersey Classic 2017, Te Awamutu
- 2: Children Go-karting, Lower Waikato Club Show day - Woodlands
- 3: Colin Hickey on "keep em clean" duty
- 4: Jersey Classic logo
- 5: Des Hickey TOP inspecting
- 6: Te Awamutu Club Santa Parade 2017
- 7: Alison Gibb & Colin Hickey visit Colin Meads Stature in Te Kuiti
- 8: Ella & Julie Pirie, Jersey Classic 2017
- 9: Michelle Ferguson & Heather Fowlie, Jersey Classic 2017

- 10: Rob Thwaites & Tony Landers
- 11: Tobias Wetzell practising judging a Jersey cow line-up at the Judging Training Day - Gibb farm, Orini
- 12: Riddell Farm, Otorohanga, Te Awamutu On Farm Competition







# Sunset Canyon DENMARK-P

Kwynn / DJHulk / Critic-P

- Outstanding Polled JUI sire at +32.3 JUI
- A2/A2
- High components
- Low somatic cell count
- Same family as the popular sire David.



Sunset Canyon Denmark - P



Dam: Sunset Canyon Hulk C Daffy - P



GDam: Sunset Canyon Matinee Daffy 937

*The outcross POLLED Jersey sire  
the market has been waiting for.*

*We are very pleased to be able to offer Denmark -P to the  
NZ Jersey Breeders.*

*Supply is very limited for the 2018 season and we urge discerning  
breeders to contact us to make a reservation. Competitively priced at  
\$24/straw or \$22/straw for orders over 25 straws, all +GST!*

**See and meet us at CD Field Days site AG15 15<sup>th</sup> -17<sup>th</sup> March 2018  
or check us out at [www.geneticchoice.co.nz](http://www.geneticchoice.co.nz)**



# TOP Review 2017

In the 2017 TOP & Classification season, Jersey NZ classified a total of 21,058 animals as follows:

## 2017 SEASON

EXCELLENT COWS	EX2	EX3	EX4	EX5	EX6	EX7	EX8	EX*
1330	773	132	299	63	20	15	19	9

2017 TOP CLASSIFICATIONS	2YR	OLDER	TOTAL	HERDS
MEMBERS	4757	1857	6614	99
SPS CONTRACT	14433	11	14444	175
TOTAL	19190	1868	21058	274

CLASSIFICATIONS OVER TIME	2014	2015	2016	2017
MEMBERS	9037	6138	5708	6614
SPS CONTRACT	9941	12747	11732	14444
TOTAL	18978	18885	17440	21058

Congratulations to the following herds, that had 10 or more cows classify as Excellent this season.

Snowfed Farm Ltd	87
Glenalla Farm Ltd	80
B W & I C McClean	68
B Thompson	48
IW Scott & Sons Ltd	47
Just Jerseys Ltd	46
B & M Montgomery	46
L A & A H Wilson	41
Totara Dale Farm Ltd	36
Riverina Jerseys Ltd	34
Roma Farm Ltd	33
G & P Wilson	29
R & P Adam	29
Euan Reeve Ltd	27
R & J Gibson	27
Upland Park Jerseys	26
Graeme Collins	22
Lynbrook Farm Ltd	21
AJ & GM & DN Tosland	21
G P S 2007 Ltd	21
Crescent Genetics Ltd	20
I & C Jordan	19

Belgrove Farms	18
Karaka Jerseys Ltd	18
Ashvale Jerseys Ltd	17
Kevin Ireland	17
Wairakau Farm Trust No 1	15
Kowhai Properties Ltd	15
Canaan Jerseys Ltd	14
Ferdon Genetics	14
Summit Farms Ltd	14
Kewl Agriculture Ltd	13
Christine Frecklington	13
C & N Hickey	13
Shane Harrison	13
DJ & FJ Lynch	12
J & K Sneddon Partnership	12
GW & KA Weld	12
R & T Goudie	11
Kendre Farms Ltd	10
Carnarvon Farms Limited	10
N J Moffitt Trust	10

# Production Highlights 2016–2017

Jersey NZ is pleased to announce the top ranked herds for the 2016/17 season as follows:

These tables are based on registered Jersey cows, and results are limited to those herds that have completed a minimum of FOUR herd tests in the 2016-17 season.

## Top 10 herds by milk solids

NAME	PTPT	COWS	LITRES	FAT	PROT	MS	DIM	BW
Cliff Shearer	BPVB	30	6721	337	280	617	290	19
Christine Frecklington	DQLC	189	6428	344	267	611	288	14
Roma Farm Ltd	BBGX	240	6135	331	258	589	290	100
Upland Park Jerseys Ltd	KKTY	364	5253	300	228	528	282	111
Ashvale Jerseys Ltd	RTP	457	4815	283	208	491	268	107
Robert & Stephanie Trainor	DWFY	45	4714	277	203	480	275	100
John & Diane Baldie	LBNQ	70	4427	288	190	478	269	89
Ian & Christina Jordan	BRDR	80	4881	269	209	478	269	23
Shinarro Jerseys Ltd	BFQP	204	4674	272	202	474	293	105
Premier Cattle Co Ltd	FYDP	25	5209	267	205	472	277	-4

## Top 10 herds by BW

NAME	PTPT	COWS	LITRES	FAT	PROT	MS	DIM	BW
Totara Dairy Ltd	MGXV	76	2673	179	121	300	262	145
Stony Ridge Farm	FVLH	46	3152	178	129	307	274	141
Fraser & Christine Macbeth	GFNM	128	3256	181	145	326	250	141
Kowhai Properties Ltd	CFWR	199	3958	230	164	394	247	140
R F & C L Lansdaal Ltd	FMHM	163	3543	205	153	358	258	140
D J & F J Lynch Ltd	LDJX	290	3044	176	133	309	270	133
Benjamin Burmeister Trust	LCRF	113	3755	214	162	376	250	131
Coombes Farms Ltd No 2	RFG	70	4021	238	175	413	276	130
Crescent Genetics Ltd	GFW	421	3518	203	147	350	260	130
Glanton Holdings Ltd	BHDQ	146	3304	200	147	347	219	130

Disclaimer: Jersey NZ is reliant on information received via reports ordered via LIC from the National database. While every effort is made to ensure data is correct, Jersey NZ accepts no responsibility for any incorrect information printed.

## Top 3 herds on milk solids

## Herd size 20-150 cows

NAME	PTPT	COWS	LITRES	FAT	PROT	MS	DIM	BW
Cliff Shearer	BPVB	30	6721	337	280	617	290	19
Robert & Stephanie Trainor	DWFF	45	4714	277	203	480	275	100
Ian & Christina Jordan	BRDR	80	4881	269	209	478	269	23

## Herd size 151-300 cows

NAME	PTPT	COWS	LITRES	FAT	PROT	MS	DIM	BW
Christine Frecklington	DQLC	189	6428	344	267	611	288	14
Roma Farm Ltd	BBGX	240	6135	331	258	589	290	100
Shinarro Jerseys Ltd	BFQP	204	4674	272	202	474	293	105

## Herd size 301-500 cows

NAME	PTPT	COWS	LITRES	FAT	PROT	MS	DIM	BW
Upland Park Jerseys Ltd	KKTY	364	5253	300	228	528	282	111
Ashvale Jerseys Ltd	RTP	457	4815	283	208	491	268	107
Cluain & Te Moanui Jerseys	DXJR	419	4716	266	191	457	276	86

## Herd size 501+ cows

NAME	PTPT	COWS	LITRES	FAT	PROT	MS	DIM	BW
Wilson Farms	CGCR	565	4456	267	184	451	265	104
Just Do It Ltd	DRVH	736	4200	259	181	440	296	108
Kaycee Farms Ltd	DJFX	560	4297	248	176	424	245	89

The TOP rankings include the two year old herd averages for members herds with a minimum of 20 two year old registered Jerseys classified in the season.

## Top 5 herds by Udder Overall

PTPT	FARM NAME	2 YEAR	UDDER OVERALL
CFYQ	B & M Montgomery	35	8.1
LTXM	Just Jerseys Ltd	43	7.8
VHY	L A & A H Wilson	34	7.8
RJNP	Glenalla Farm Ltd	89	7.6
BYQL	IW Scott & Sons Ltd	49	7.6

## Top 5 herds by Dairy Confirmation

PTPT	FARM NAME	2 YEAR	DAIRY CON
LTXM	Just Jerseys Ltd	43	8.2
CFYQ	B & M Montgomery	35	8.0
RJNP	Glenalla Farm Ltd	89	7.9
DQBN	Kevin Ireland	30	7.9
VHY	L A & A H Wilson	34	7.8
BYQL	IW Scott & Sons Ltd	49	7.8
BHFW	R & J Gibson	23	7.8
HPQ	R & P Adam	34	7.8
NTFY	A & S Hamilton	47	7.8
VFL	G & P Wilson	40	7.8
MNPX	G P S 2007 Ltd	28	7.8
DQDW	B Thompson	20	7.8
BBGX	Roma Farm Ltd	65	7.8
GQR	Kewl Agriculture Ltd	59	7.8



# Industry Affairs

## Payment of milk fat and protein by Fonterra – update

Like many of you, Industry Affairs expected the payment ratio of milk fat to protein for the 2017-18 season to be greater than 1. When it came out at 0.89 we were surprised and decided to investigate further.

As you know, Fonterra use a three year rolling average to calculate the milk fat/protein ratio (known as the value component ratio or VCR). The value of 0.89 is the average VCR for the 2014/15, 2015/16 and 2016/17 seasons (see table).

2014-15 VCR	0.64
2015-16 VCR	0.95
2016-17 VCR	1.08
Three year VCR	0.89

As you know, this ratio is predominantly set from auction prices achieved at the GDT auctions. The prices achieved for fat products (AMF and butter) had been high for the latter part of last season (from January 2017), whereas protein products like skim milk powder had been stagnant (see graph). So we were surprised when Fonterra came out with a VCR of just 1.08 for last season, just 14% higher than the 2015-16 season VCR.



To help us understand this, we met with Stephanie Allan, the General Manager of Pricing and Insights at Fonterra. Stephanie explained that there were two main reasons the surge in milk fat prices in the latter part of the season weren't fully captured in the VCR:

1. The GDT auction has six contract periods from one to six months so a lot of the milk produced in the latter part of the season is presold prior to Christmas – on this occasion, prior to the major surge in fat prices.



2. The GDT prices that go into the Farm Gate Milk Price and VCR calculation are realised at shipment time, not at the time of the auction. The average time between when a product is sold at GDT and shipped is approximately three months. Hence a lot of the product sold at the latter part of last season when milk fat was high was not shipped and therefore invoiced till after the financial year and therefore missed being incorporated into the VCR calculation for 2016-17 season.

We therefore anticipate that the current season VCR (to be published June 2018) should capture the fat prices that were missed last season. Also, the relative prices of fat to protein have remained high throughout this season.

The \$US GDT prices on 16 January 2018 were; AMF: \$6547, SMP: \$1818. We therefore anticipate a significant lift in the 2017-18 VCR. Given this, and the fact the low VCR of 0.64 for the 2014-15 season will disappear from the calculation, the three year rolling average coming out in June 2018 should be significantly above 1.0. Next season, producers of Jersey milk will be paid more per Kg of MS than the Fonterra average.

It is pertinent to note that in our discussion with the GM of Pricing and Insight and others who have been involved in this area, it became evident that the Fonterra Milk Price Methodology (that includes VCR) is one of the most intensely audited manuals around. Each year it is audited internally, then by an external auditor (PricewaterhouseCoopers), and, as part of DIRA requirements, by the Commerce Commission.

Source of data: Fonterra Farmgate Milk Price Statement 2017

### Quality of on-farm data recording is impacting on NZAEL data outputs.

The industry affairs group met with Jeremy Bryant, Manager of NZAEL. Numerous topics were discussed with one of the big ones being how data recording on farm impacts on the quality of information NZAEL is able to give back to the industry. Within our industry there is a huge range in the quality of data recorded. At one end are herds that provide reasons for cows leaving the herd 100% of the time and where 99% of calvings match the mating date. The other extreme are herds where no cow fate reasons are recorded and less than 15% of calvings match the mating date. There are a significant number of these poorly recorded herds to skew data and this is particularly evident and a problem with bull reproofs.

When NZAEL reran bull proofs with only progeny test herds and DNA verified animals, the reproof bias (decrease in bull BW from that produced in progeny test herds to that when used widely in industry) was corrected for Friesian bulls. Unfortunately, this did not happen for Jersey bulls possibly because the number of Jersey offspring was too low once you excluded the non DNA verified offspring.

More work is being done in this area but it does open up the possibility of Jersey NZ working with NZAEL to increase the pool of DNA verified Jersey animals. It also reminds us that how accurate or diligent we are with our data recording does have implications for the whole industry. We intend to continue discussing this area with Jeremy.

### Fertility BV trial is providing promising results

As part of the research to improve the accuracy of the fertility BV, DairyNZ in collaboration with other research groups developed a herd of 500 calves – half with a low fertility BV (-4.6 av) and half with a high fertility BV (+5.6 av).

These calves have all been farmed together and they are now in-milk two year olds. The aim of this study is to develop phenotypic markers that could be developed to improve the accuracy of the fertility BV.

The first phenotypic marker that has been discovered is the age of puberty. The high fertility BV group reached puberty 21 days sooner and 25kg lighter than the low fertility BV group. So it looks like the age of puberty of a bulls daughters shows promise as one measure of a bulls fertility BV. Research is progressing on developing practical methods for measuring age at puberty on a widescale.

There are also unconfirmed reports that the high fertility BV group had a much better submission rate than the low fertility BV group as in-milk two year olds, but this data is yet to be published.

As well as this work, NZAEL are introducing more immediate steps to improve the accuracy of the fertility BV. A new fertility animal evaluation model is under development with a plan to release this in February 2019. It is estimated that this model will improve the fertility BV accuracy by about 20%.

The main differences between this and the current model are:

- It will include heifer calving records (currently not included)
- Gestation length will be used as a correlated predictor of fertility
- Milk Yield and Body condition score will be dropped as correlated predictors of fertility
- Actual conception day will be used rather than the current system of whether or not the animal conceived in the first six weeks of mating.

All this work is indicating that genetics does play a significant part in determining animal and herd fertility and, as breeders, is something we need to keep in mind.

**Roger Ellison**  
Industry Affairs Committee

## Youth Council Report

**It has been three years since the start of the youth council at which point we welcome two new council members and we say farewell to two of our inaugural youth councillors – Melissa Stephen and Colin Hickey.**

Although farewell from the Youth Council it is not farewell entirely as Melissa works for NZAEL and will still have valuable input into the work of Jersey NZ through her work while Colin has moved on to become the convenor of the Marketing and Promotions Committee. We thank them for their valuable contribution to the Youth Council and wish them well for future endeavours. We welcome two new Youth Councillors, Cameron Townshend and Sophia Clark profiled on page 49.

In the December meeting a review of lessons learnt was conducted with reflections such as: I have clearer understanding of Governance, understanding the boundaries of management, appreciating strategic direction, the importance of communication, learning to appreciate the different personality profiles and being out of our comfort zone can be a positive experience.

Ten youth travelled to Australia in January this year to attend the Dairy Week and our Council were very pleased to support them by providing T-shirts and caps. All who attended had a great learning experience and were impressed with the amazing support from the Australian breeders who lent them valuable animals to work with. Most returned to put their learnings into practice at NZ Dairy Event in Fielding the following week. Again, we entered a team in the Semex Youth Challenge Team event at Dairy Event: Thomas Riddell, Crystal Scown, Joshua Shaw and Hannah Nicholson and were very delighted when they came third.

In June of this year will be the World Jersey Cattle Bureau Conference in America and we approached the Board who agreed to match us dollar for dollar to the level of \$5000 in order that we may send five of our youth members to this conference. The Youth Committee has set up a raffle to assist us to raise the funds and we encourage you to purchase a ticket, \$50 each with a maximum of 200 tickets. The prize is your choice of one of the calves on offer. Any Jersey NZ member between the ages of 20-35 years may apply to attend the World Conference using the application form on the website.

## Murray Harnett Challenge Junior Judging Competition 2018

**The Murray Harnett Challenge took place at the NZ Dairy Event in Feilding on Thursday 1 February 2018.**

Six of our Jersey NZ youth members competed for this prestigious trophy – Katie Mears, Crystal Scown, Joanna Fowlie, Ethan Thorpe, Craig Robertson and Sharon Kooter. The competition saw them judge a line-up of five mixed age cows over a 10 minute period, then individually come out and line the cows up and talk to their placings as in a show situation. They were allocated points by the overjudges Warren Ferguson and Peter Gilbert for their reasons (30 points); verbal presentation (15 points); speed (10 points), ring craft manner & personal appearance (10 points). These are added to the points from their placing of the animals (35 points).

Crystal Scown from Otorohanga was the 2018 winner of the Murray Harnett Challenge, with Craig Robertson from Cambridge in second place and Katie Mears from Invercargill in third.

Crystal and Katie went on to represent Jersey NZ in the World Wide Sires All Breeds Young Judge Competition the following day, where Crystal placed first.



L to R: Crystal Scown with Alison Gibb (President Jersey NZ)

Craig also competed in the Holstein Friesian Judging competition where he also placed second; he had the option of representing either breed society, hence Katie advanced through to the WWS competition, representing Jersey NZ.

Special thanks also to the overjudges Peter Gilbert and Warren Ferguson, along with the members who made both cows and leaders available for both competitions. We couldn't hold this competition without your support. Thanks also to NZ Dairy Event organisers for their assistance.

Finally, well done to all competitors.



## Who are our latest Youth Council members?

### Cameron Townshend

My name is Cameron Townshend, I'm 23 and have recently been appointed to the Jersey NZ Youth Council.

My Jersey journey began at the grassroots with my parents running Jerseys on the Hauraki Plains while growing up, 250 of which make up the Raynham Stud and have produced bulls such as Raynham Ozark.

After completing 18 months living in the US while my parents developed a dairy farming business there I returned to finish my high schooling at Hauraki Plains College and went on to complete a B.Com (Ag) from Lincoln University.

In March 2015, I started at Fonterra in the 0800 Supplier Services Team on the phones dealing with farmers in regards to all manner of queries and issues and have now progressed into the Cheese & UHT Product Resolution Team where I handle product quality, market eligibility, specification changes and export documentation for the cheese and UHT product groups at Fonterra.



In my spare time you'll find me either fishing or on the hockey turf and alongside these hobbies I am also a director and shareholder of a dairy farming investment at Tauhei which has been a great experience.

I would like to thank Jersey NZ for my role as a Youth Councillor and thoroughly look forward to serving the Association and its membership.

### Sophia Clark

Sophia and her partner Aaron currently 50/50 Sharemilk 270 Jersey and JX cows in Matamata.

Never one to stand on the sidelines she is involved in several industry groups and has taken full advantage of every opportunity NZ agriculture has thrown at her. After growing up in Onepu on a lifestyle block with a small herd of purebred Herefords, Sophia knew her future lay with cows, she just didn't know where that path would take her.

After graduating Lincoln University with a Bachelor of Commerce in Agriculture, she went shepherding in the King Country. A few years down the track after a farming OE in Scotland and Wales she decided to give dairying a crack and has somehow ended up with a reasonable number of cows and a reasonable debt to the bank.

She recently graduated the six month Kellogg rural leaders program where she studied how to maximise a sharemilker's asset and strategies for sustainable herd growth. Other recent achievements include winning the Piako district final in the NZ Young Farmer of the Year Competition and representing Mid Northern RAS at the Rural Ambassador awards for the last two years. In her spare time she enjoys gardening and going fishing.



Her goals in future are to eventually get a bull selected by one of the breeding companies and to complete a Nuffield Scholarship. Sophia believes Jerseys are the way of the future because you can milk once a day and then go fishing.

Sophia applied for the Youth Council position to gain experience in governance and, because she values the importance of the Jersey breed and the importance of succession in Breed Societies. She feels she can offer a slightly different but no less valid perspective having not grown up dairying and having formed a love of the Jersey breed of her own accord.

## Totara Dale Stud – Growing their equity

contributed by Alison Gibb

**Nick and Stephanie Browning are in an equity partnership with his parents Megan and Trevor Browning forming the basis of the Totara Dale Stud in Dargaville, Northland.**

When Nick left school, he took up an apprenticeship with Norwoods and for the next seven years worked as a Field Technician for New Holland. After working for a year as a Farm Manager at Tangiteroria he moved home to work for his parents, progressing from Farm Manager to Lower Order Sharemilker.

At the age of 13 years, Nick purchased Lochnor Panache Alice from the late Lloyd Chitty at the annual Northern Wairoa sale. Lloyd was so thrilled to see a young man purchase one of his animals that he gave Nick another incalf heifer, Lochnor Super Allure, explaining that she had Big Hollow and Ferdon Genetics in the background which would provide Nick a strong basis from which to breed. Lloyd had started his own journey by receiving an animal from an established breeder and wanted to pass the tradition on. Today, Nick says, there are at least 24 cows in the herd which trace back to these two Lochnor animals – “I was fortunate that they predominately gave me heifer calves”.

Four years ago, as a result of a succession planning discussion with Charmaine O’Shea, the family set up an

equity partnership to which Nick has contributed his 40 Jersey cows. Trevor, Nick and one full time farm assistant, milk 370 cows on the 150ha milking platform and rear beef cattle on the remaining 250ha.

Each year they rear 50 Jersey bulls, 100-120 heifer replacements, 30 beef heifer calves, 75 beef weaner steers, the beef are taken through to two year olds. They buy in 4-day old Angus and Black Hereford but also, they keep Charolais and Red Devon calves from their Jersey cows.

Further up the road on a 16ha block that Nick and Stephanie have purchased, as it has a cowshed, Nick milks empties through the winter and rears 80 calves that they buy in. They recently purchased a Charolais stud bull from Ratehi with a view to beginning their own Charolais stud. Nick believes the Jersey Charolais cross is a great combination and is quick to add that he has no issues with calving.

“The Charolais put a bit of size into the animal giving it more oomph and hence they grow quicker, and I love the markings that often result”.



Margaret Pinny (Nana), Nick and mum Megan Browning



Cows are predominantly pasture fed but are supplemented with 1-2 Kg of meal in the shed, turnips grown on farm (8 ha) and 600-800 silage bales made annually. Nick confesses to being tractor and machinery mad and does all the contracting himself. Tractors were their chosen bridal transport for the wedding much to the intrigue of the attendees.

"There are challenges with a Northland farm, particularly as we only have 35 ha of flat pasture, 20 ha rolling and the rest steep contour. There is a constant battle with Kikuyu but that's where the beefies are useful for cleaning that up" says Nick. He believes Jerseys are a great breed for Northland as they cope well with the heat, are light on their feet given the clay soil and cope well with the steepness.

"On a hot day my cows will still be out grazing while the neighbour's Friesians are huddled under the trees fighting for shade".

Breeding is a high priority and is definitely in the blood from his mother's side. Megan was a Pinny and many of you will know the late Rex and Margaret Pinny. Margaret lives on the farm too and takes a keen interest in the animals. Nick will often take his Mum and Nana to look at the latest crop of calves, inspect the yearlings or discuss a prospective heifer for the Northern Wairoa annual sale. Nick knows he can always rely on them to give him the generations of breeding in behind the chosen animal.

"I probably use too many bulls but I'm looking for good conformation and solid BW for half the herd and for the other half I look for good type bulls with some style that stand out from the pack. Stature has been an important focus and I'm starting to see the results now as the two year olds are bigger than the six year olds."

Nick (a Jersey NZ Youth Ambassador) together with Megan and Margaret are very keen on encouraging the young people around them to take an interest in showing and caring for calves. This was featured in the last Jersey FOCUS and in this edition, we see the results of their show. Nick and Stephanie's two older children, Sam five years and Evan three years, are already keen exhibitors and no doubt baby Jane five months will join in soon. The family regularly show at Whangarei, Bay of Islands, Northern Wairoa, Warkworth and on occasions the Easter show in Auckland.

Last year Nick qualified as a judge and was invited to be the Jersey Associate judge at this year's NZ Dairy Event in Feilding – an experience he thoroughly enjoyed. The over judge, Mr Robert Anderson from Australia, commented on Nick's ability saying that he and Nick were in total agreement throughout the event.

Where to from here? Nick and Stephanie are very happy where they are and their goals are to grow their equity and keep improving the breeding of the cows.



Totara Dale Kia Kaha Maud - Age 8 years



Sam and his prize winning calf Totara Dale Joskin Alice, a descendant of Lochnoor Panache Alice.



# Paddock Photography 101

contributed by Nigel Riddell

1. Start with a clean animal. This will help with the finished product.
2. Direct the animal to good ground for the photo shoot. Flat to slightly rising is best.
3. If there is bright sunlight, make sure the sun is behind you.
4. For a side profile shot, line yourself up with the animal's hips, then take a couple of sideways steps towards the rear of the animal. This will help keep the animal in proportion and also show some rear udder.
5. Bend the knees, don't stand tall when taking the shot.
6. Ideally you want the front legs apart so you can see space between them.
7. The near rear leg wants to be forward to show a view of the fore and rear udder.
8. Ideally you want the animals head up and attentive with ears forward. Having a second person will help you with this.
9. Make your animal fill at least 80% of the frame when you take the shot. This will help you with image quality and cropping.
10. Use a camera with a decent zoom, allow plenty of room between you and the animal when taking the shot.
11. Be patient and take lots of photos, happy hunting.



# Kellogg Rural Leadership

contributed by Paul Edwards

**I recently had the opportunity to complete the Kellogg Rural Leadership Programme. For those that haven't heard of it before, the course aims to develop leadership skills in the rural sector.**

The Kellogg course has been operating in New Zealand since 1979 but has evolved over the years. The origins of the programme lie in the 1960s after W.K. Kellogg Foundation identified a need to support the development of agricultural and rural leaders. Yes, that's the same Kellogg that founded the well-known American breakfast cereal company.

The foundation's philosophy was "to increase the participant's understanding of political, social and economic systems, to develop social skills, to be effective spokespeople for their industry or community, to expand individual networks, and to develop future political, civic and organisational leader". There were about 45 leadership programs developed in the United States, Canada, New Zealand, Scotland and Australia. Here, Lincoln University secured the rights to run the course, and today is the only one that still retains the Kellogg name.

The course has recently been brought under the umbrella of the New Zealand Rural Leadership Trust, which also runs the Nuffield Scholarship Programme. In 2016 the format changed from annual to six-monthly, allowing two intakes per year.

The current format has three phases, a 9-day block at Lincoln University, a 4-day block in Wellington, and a final 4-day block back at Lincoln. During this time you also complete a research project of your choice – something that is of interest to you.

The initial 9-day course is all about developing your leadership skills, including coaching, presentation and team dynamics. The Wellington block focussed on understanding how decisions are made, particularly around policy. This included an overview of parliamentary process, talks from policy analysts and NGO's as well as small group discussions with various leaders.

One of the highlights for me was the range of interesting speakers in each block. Another was the diversity of my fellow "Kelloggers". The dairy, red meat, arable, horticulture and viticulture sectors were all represented.



Paul Edwards

For my project I chose to look at the regional changes in the dairy industry over the last twenty years. This topic was of interest to me because there has been much public debate over the growth of the industry, which in terms of milksolids production had more than doubled during the period. It's easy to assume (and many do) that this growth has happened right across the country. Perhaps unsurprisingly this isn't the case, but now there's the data to show it. For example, six of 14 regions have static or declining cow numbers, and 83% of the increase in cow numbers can be attributed to just four regions.

The main recommendation of the report was that due to significant regional variation, and even within regions, that blanket policy approaches are unlikely to achieve a desired outcome effectively or efficiently and that information/packages/policy should be tailored locally to increase effectiveness.

You can read the project report, along with that of other alumni, as well as information about the programme at [www.kellogg.org.nz](http://www.kellogg.org.nz).

The strategic partners of the Kellogg Programme are DairyNZ, Beef + Lamb NZ, AGMARDT and FMG.



# International Dairy Week – Outstanding success

contributed by Julie Pirie

The International Dairy Week Study Tour undertaken by 10 young people was an outstanding success in personal development over a range of skills.

The idea was sparked from a comment Anthea Day had made at the NZ Dairy Event in 2017, following the success of the Hot Shots team– she encouraged Matt Satherley and I to bring the team over to IDW. The Youth Challenge at IDW is different than Dairy Event – It requires a group of 10 youth – four clipping, three parading and three judging. The points system is also designed to encourage younger members to participate. We decided early on that older youth would benefit from the experience, so rather than look to win the Youth Challenge; we set the trip up as a study tour.

On January 20, 10 young people, accompanied by six parents and grandparents departed Auckland in the early hours – with thoughts of heat, flies, snakes and spiders, as well as the excitement around competing in the IDW Youth Challenge.



1



2

We arrived in Tatura midday, and the heat and flies soon made their presence felt. The animals and exhibitors were set up in buildings around the grounds – with separate washing and milking facilities allocated according to disease status and preference.

All exhibitors go to a great deal of effort to make their animals comfortable. With temperatures that reached over 43 degrees, there was a constant buzzing of industrial fans and some even had air conditioning units in their stalls.

We met Justin Johnstone, organiser of the Holstein Youth Challenge. Justin provided feed and an area for our heifer, which we were required to look after for 24 hours prior to the Youth Challenge.

We also met up with Robyn Barbour – the co-ordinator of IDW – she made us feel very welcome, and introduced us to many people.

A few of the team stayed with the animal, washing and feeding it, while the others organised food and settled into the accommodation, 20 minutes away in Shepparton.

Sunday was the big day – our heifer was predominantly white – this in combination with the heat meant she was washed at least three times.

There were 14 teams competing– in the first heat, half the teams clipped, while the other half paraded, this was reversed for heat two.

We had three animals borrowed from exhibitors – the exhibitors incredibly helpful and obliging. It would have been impossible to compete in the competition without their generosity.

The clipping challenge was much the same as in New Zealand, although with only 30 minutes given to prepare the heifer for the show ring. Hope Satherley, Loren Osborne, Georgia Whitworth and Zoe Botha competed in this event – using great team work and skills to end up 3<sup>rd</sup> overall with 90 points. The winning team scored 92.



3



The parading team had the biggest challenge in that they were using borrowed animals, and we were a little unsure of the format. Hannah Nicholson, Ethan Thorpe and Ella Pirie handled the animals well – adapting to the different Australian style. The side by side leading of the three animals meant a co-ordinated approach – and was a great spectacle. It is one of the ideas we thought could be introduced to our own NZ Youth Challenge.



4

After the two heats, four of the clipped animals were led by our clipping team, and judged by all 14 teams. Katie Mears, Celine Pirie and Thomas Riddell judged these animals; Katie did a great job on the microphone, justifying the placings as she saw them.

The Jersey NZ Youth Team finished officially 11<sup>th</sup> – which wasn't unexpected given the penalties due to not meeting the age parameters. The team was particularly pleased with the clipping result – and were competitive in the other events.

For those that may have missed it – we videoed a lot of the competition – this can be seen on the Jersey NZ Youth Facebook page, along with photos of the trip.

Various members of our group were asked to exhibit in the Youth show, which started on Monday. All of the group were also offered animals for the handling classes later in the afternoon.

Those exhibiting for breeders did an outstanding job, and we were very proud of the professionalism of the youth from our team. Loren lead her animal to first place, and on to honourable mention in the youth dry stock section, with Hannah and Katie leading animals into ribbon placings as well.

The handling classes were very large – there were 45 entries in the Intermediate (14 to 17 years) age group. Notable achievements were Loren achieving second place in the senior section and Thomas a credible 12<sup>th</sup> in the Intermediate section.



5

By this stage all the excitement had caught up with the group, so Tuesday was to be a morning watching the Illawara and Ayrshire show followed by a trip to Echuca to cruise the Murray River.



The drive to Echuca highlighted the harsh conditions that the Australians face – there wasn't any green pasture to be seen. Much of the land around this part of the state is now in fruit trees. Many of the dairy animals we saw were on standing pads being fed supplements.

The standard of animals in the show ring was incredible – we made a number of observations around their feeding – mainly the types of feed used. High quality barley and oat straw was the feed of choice to the animals, we saw very little pasture hay or silage. Milking cows were also fed a mixture of grain based products.

Several of the group attended a nearby on-farm clearing sale – having the opportunity to see animals sold for up to \$30,000.

Wednesday was always going to be a highlight – the Jersey show – the day started with the very youngest of calves and ended with the awarding of the Champion Jersey Cow. The judge was Mr Pat Nicholson.

There were around 230 animals exhibited in 18 classes in the Jersey section, along with Championships for Junior, Intermediate, Senior, and then Grand Champion Jersey. Also awarded were an exhibitor encouragement award, a premier Sire Award and a Premier Breeder and Exhibitor award. Certainly a long day for the judge. Huge air conditioning units have been installed in the main pavilion, with previous attendees noting a huge improvement in audience and stock comfort.

Another highlight was the IDW World Wide Sires Evolution Sale – a Holstein sale, with a huge emphasis on presentation and pedigrees, it was a well-attended spectacle – particularly with the skills of auctioneer Brian Leslie.



Many of the group had not been to Australia before, so a visit to Kyabram Fauna Park was a must – where we got to see plenty of kangaroos, koala and wombat, as well as snakes – safely behind thick glass!



Mrs Patty McMurray, a well-known judge, who helps youth in the USA, spent time with us, answering our questions on judging and showmanship skills, as well as explaining some of the changes in showmanship in the USA. She would really like to see international teams come to compete at their state show.

Back at IDW the Holstein show was continuing, with some fantastic animals on show. Another difference between NZ and Australia is the all breeds events – only the Champions and Reserve are judged for overall Champion – this seemed to be a good idea. Unfortunately we had to leave before the Grand Champion exhibit was announced.

We had a busy, but fabulous time. Highlights were the hospitality shown to us by the exhibitors, the willingness to help us and the sheer scale of the event.

As this was the first time a New Zealand team has entered the IDW Youth Challenge, there were many unknowns. We have gained experience and knowledge that should make organising future tours easier.

The study tour would not have been possible without the enthusiasm shown by the youth participating, the help from parents, the overwhelming generosity of those organising and exhibiting at IDW, and the sponsorship provided by Jersey NZ.

**Julie Pirie**  
Study Tour Leader



9



10

1. The team ready for departure – From left, Katie Mears, Ethan Thorpe, Ella Pirie, Brian Pirie, Julie Pirie, Thomas Riddell, Hope Satherley, Ross Riddell, Celine Pirie, Georgia Whitworth, Melanie Botha, Loren Osborne, Matt Satherley, Zoe Botha, Hannah Nicholson
2. The JerseyNZ shirts looked great – and stood out in the crowd!
3. The Clipping Team – Matt Satherly helping set up with Loren, Hope, Georgia and Zoe.
4. The handling team waiting to enter the arena Ella Pirie, Ethan Thorpe, Hannah Nicholson
5. The judging team in action.
6. The team aboard PS Pevensey - Murray River
7. Snake!!
8. Fun night at a Thai Restaurant
9. Felt Ribbons!!
10. The team – one of many painted cows in the Shepparton district.



# Jersey NZ Youth heifer raffle

The Jersey NZ Youth Committee have organised this raffle in order to raise money to partially subsidise five young Jersey NZ members attend a Youth Symposium to be held in conjunction with the World Jersey Conference in the USA in 2018.

Raffle tickets are on sale now at \$50 and are available to purchase from the Jersey office - 07 856 0731.

This is a fantastic opportunity to have a chance to win some great genetics. There is something in the selection for everyone. One of these heifers could be yours!!

Congratulations to the following breeders whose heifers have been selected for the raffle:

- Gavin & Catherine Vowles - Two View Jerseys
- Mark & Diane Townshend - Crescent Genetics
- Roger & Gleys Ellison - Ellison Jerseys
- Russell Thomson - Mirodale
- Peter & Ann Gilbert - Snowfed Jerseys
- Warren & Michelle Ferguson - Ferdon Genetics

For further information on these six heifers check out the website for 3gps and footnotes.

## ELLISON DEGREE MAIRE



ELLISON SPEEDY MIAMI - DAM



CRESCENT OLM MIA - GRANDAM

## GLENALLA JOEL TINA



GLENALLA DEANS TENDO - GRANDAM

## TWO VIEW CYCLONE REVA



TWO VIEW ELORA S3J - DAM

## MIRODALE FIREY PATRICIA



CARNMOR ZELLOS PATRICIA - DAM'S UDDER

## FERDON APPLEJACK FLOW



FERDON GOVERNORS FLOW - DAM

## CRESCENT INTEG XENA ET



OKURA LT INTEGRITY - SIRE

**SUPPORT JERSEY NZ YOUTH – GET YOUR TICKET NOW!**

# Semex Regional Jersey On-Farm Challenge November 2017

Thank you for competing in the Semex National Jersey On-Farm Challenge 2017.

Semex has sponsored product prizes for the following winners:

- Regional team winners receive \$100 each for first place
- Overall Youth section under 30 years presented to the highest placed animal; \$100 per class (in each age class).
- National team winners receive \$300 for first, \$200 for second
- National Conformation winners receive \$300 for first, \$200 for second (in each age class).

- Overall National Supreme Conformation Winner receives \$500
- Overall National Supreme Semex Cow Winner receives \$500

The top TEN conformation cows in each Conformation Class over ALL regions and the top TEN teams over ALL regions will move forward to the National Finals announced at the 2018 AGM & Conference, Distinction Hotel, Whangarei on Wednesday 6 June 2018.

These finalists will be highlighted in blue.

## Region 1 – Northland

TEAM
1 Totara Dale Farm (Trevor & Megan, Nick & Stephanie Browning)
2 Kaycee Farms Ltd (Kevin & Christine Tucker)
3 Waiteitei Jerseys (Graeme Collins)
TOP 2 YEAR OLD CONFORMATION
1 Totara Dale Gun Nell – Totara Dale Farm Ltd
2 Glen Kaycee LT Butter – Kaycee Farms Ltd
3 Glen Kaycee CJG Ventura – Kaycee Farms Ltd
TOP 3 YEAR OLD CONFORMATION
1 Totara Dale Speed Goddess – Totara Dale Farm Ltd
2= Glen Kaycee Iceberg Hazel – Kaycee Farms Ltd
2= Totara Dale Izzy Bobbin – Totara Dale Farm Ltd
TOP 4 & 5 YEAR OLD CONFORMATION
1 Totara Dale TJV Carlotta – Totara Dale Farm Ltd
2 Totara Dale High Alea – Totara Dale Farm Ltd
3= Glen Kaycee Elicit Hussy – Kaycee Farms Ltd
3= Waiteitei MM Lass – Waiteitei Jerseys
TOP 6, 7 & 8 YEAR OLD COW CONFORMATION
1 Totara Dale KK Maud – Totara Dale Farm Ltd
2 Totara Dale Ace Goddess – Totara Dale Farm Ltd
3 Waiteitei Zealot Bellona – Waiteitei Jerseys
TOP 9 YEARS & OLDER COW CONFORMATION
1 Totara Dale Meg Lite – Totara Dale Farm Ltd
2 Glen Kaycee Signature Kya – Kaycee Farms Ltd
3 Glen Kaycee Nimrods Edlyn – Kaycee Farms Ltd

## Region 2 – West Waikato

TEAM
1 Just Jerseys Ltd – Team 1 (N & J & R & E Riddell)
2 Mount Cosy Jerseys (Summit Farm (Otorohanga)
3 Riverina Jerseys (W & L Berry)
4 Tahau Jerseys (JM & KL Sneddon)
5 Just Jerseys Ltd – Team 2 (N & J & R & E Riddell)
TOP 2 YEAR OLD CONFORMATION
1 Thornlea SP Leonie ET – Just Jerseys Ltd – Team 1
2 Ferdon Bstone Lacey – Ferdon Genetics
3= Ferdon Celebrity Lily – Ferdon Genetics
3= Tahau Bramzello – JM & KL Sneddon – Tahau
TOP 3-YEAR-OLD CONFORMATION
1 Ferdon Bstone Lill – Ferdon Genetics
2 Ferdon Tequila Lanita – Corey Ferguson
3 Ferdon Tequila Starfinch – Corey Ferguson
TOP 4 & 5 YEAR OLD CONFORMATION
1 Ferdon TBone Lorna – Ferdon Genetics
2 Ferdon Bstone Lippy – Ferdon Genetics
3 Ferdon Legacy Faline – Corey Ferguson
TOP 6, 7 & 8 YEAR OLD COW CONFORMATION
1 Ferdon B Stone Rose – Ferdon Genetics
2 Ferdon Canada Sarah – Corey Ferguson
3 Roscliff Ivins Gilda ET – Just Jerseys Ltd – Team 2
TOP 9 YEARS & OLDER COW CONFORMATION
1 Carnmor Laces Bonnie – Mount Cosy Jerseys
2= Thornlea Jos Dolly – Just Jerseys Ltd – Team 2
2= Ferdon Folly's Fashion – Ferdon Genetics

### Region 3 – East Waikato

TEAM
1. Upland Park Jerseys (A & N Walford)
2. Crescent Genetics (M & D Townshend)
3. Ngatea Jerseys (B & J Pirie)
4. Two View Jerseys (G & C Vowles)
5. Green Leaf Farm (A & M Johnson)
6. Grahmar Jerseys (G & M Wallace)
TOP 2 YEAR OLD CONFORMATION
1 Kauri Glen Comer Pegie ET– Tony Barton
2 Upland Park Audio Sun – Upland Park Jerseys
3 Upland Park KS Narissa – Upland Park Jerseys
TOP 3 YEAR OLD CONFORMATION
1 Upland Park Bolt Macy S3J – Upland Park Jerseys
2 Denson Dale Vanahlem Clay – Denson Dale Jerseys
3 Calrenah Val Paula ET – Grahmar Jerseys
TOP 4 & 5 YEAR OLD CONFORMATION
1 Upland Park OLI Vanya – Upland Park Jerseys
2 Shinarro Pioneer Ella ET – Ngatea Jerseys
3= Upland Park HC Mari S3J – Upland Park Jerseys
3= Denson Dale Vision Rion – Denson Dale Jerseys
TOP 6, 7 & 8 YEAR OLD COW CONFORMATION
1 Denson Dale Regio Pam S3J– Denson Dale Jerseys
2 Upland Park Sweet Velvet – Upland Park Jerseys
3 Paterangi Mans Mamme – Upland Park Jerseys
TOP 9 YEARS & OLDER COW CONFORMATION
1 Denson Dale K B Vision – Denson Dale Jerseys
2 Lynbrook Mans Louise – Kevin Ireland
3 Denson Dale Vision Coral - Denson Dale Jerseys

### Region 4 – Lower North Island

TEAM
1= Lexland/Derriland Jerseys (A&G&D Tosland)
1= Merrifields Jerseys (R & J Gibson)
2 Kohitiata Jerseys (N & D Atkins)
3 Thornton Park (M & S Booth)
4 Te Awa Jerseys (P & D Capes)
5 Landell Holdings (L & K Williams)
TOP 2 YEAR OLD CONFORMATION
1 Leithlea Charlie Fava– Leithlea Jerseys
2 Derriland WSM Charlie – Lexland/Derriland Jerseys
3 Kohiti Degree Jenna – Kohitiata Jerseys
TOP 3 YEAR OLD CONFORMATION
1 Landell Valentino Emes TW – Landell Holdings
2 Landell Valentin Emily TW – Landell Holdings
3 Thornton Park T Cassie – Thornton Park
TOP 4 & 5 YEAR OLD CONFORMATION
1 Lexland VI Alwyn – Lexland/Derriland Jerseys
2 Leithlea Tequila Sheba – Leithlea Jerseys
3 Leithlea Govenor Sandi - Leithlea Jerseys
TOP 6, 7 & 8 YEAR OLD COW CONFORMATION
1 Leithlea Gannon Sun S2J – Leithlea Jerseys
2 Leithlea Ozik Vanity – Leithlea Jerseys
3= Merrifields Got Pal – Thornton Park
3= Philsan Supernova Dorcia - Lexland/Derriland Jerseys
TOP 9 YEARS & OLDER COW CONFORMATION
1. Dunwald Desire Rubie – Leithlea Jerseys
2. Leithlea Futurity Rubie - Leithlea Jerseys
3. Kohiti Nimrods Tigris – Kohitiata Jerseys

### Region 5 – South Island

TEAM
1 Horopito Jerseys (G Ferguson)
2 Lynbrook Farm Ltd (S & N Ireland)
3 Cawdor Jeresys (F & C MacBeth)
4 Willowhaugh Jerseys (I & C Jordan)
TOP 2 YEAR OLD CONFORMATION
1 Willowhaugh Reg Gemma – Willowhaugh Jerseys
2 Westbourne T Bone Yoko – Snowfed Farm Ltd (P & A Gilbert)
3 Somerset OT Leader – Robbie Wakelin
TOP 3 YEAR OLD CONFORMATION
1 Willowhaugh Tbone Flirt – Willowhaugh Jerseys
2 Glenalla Hired Lorna – Glenalla Farm Ltd (M Gilbert)
3= Lynbrook Tific Fandance – Lynbrook Farm Ltd
3= Willowhaugh OT Feebee - Willowhaugh Jerseys

TOP 4 & 5 YEAR OLD CONFORMATION
1 Glenalla Sultans Ekka– Snowfed farm Ltd (P & A Gilbert)
2 Glenalla Clip Frisky S3J – Glenalla Farm Ltd (M Gilbert)
3 Glenalla Murfs Immie S2J – Glenalla Farm Ltd (M Gilbert)
TOP 6, 7 & 8 YEAR OLD COW CONFORMATION
1 Glenalla Deans Laurie S1J – Snowfed Farm Ltd (P & A Gilbert)
2 Glenalla Deans Rosa – Snowfed Farm Ltd (P & A Gilbert)
3 Willowhaugh Tbone Vanessa – Willowhaugh Jerseys
4 Glenalla Time Gwido - Glenalla Farm Ltd (M Gilbert)
5 Glenalla Deans Tendo - Glenalla Farm Ltd (M Gilbert)
TOP 9 YEARS & OLDER COW CONFORMATION
1 Glenalla LM Queen S3J – Snowfed Farm Ltd (P & A Gilbert)
2 Willowhaugh Samuel Verity - Willowhaugh Jerseys
3 Calrenah Green Beauty ET – Horopito Jerseys



# WIN

## A YEAR'S SUPPLY OF IMMUNITY+ SIRES\*

*\*Purchase necessary, conditions apply.*

## TO ENTER

*Simply purchase a minimum of*

### 25 straws of Immunity+ Sires

*Your order will enter you into the draw on completion of entry form.*

**CONTACT YOUR SEMEX AREA MANAGER & ORDER TODAY!**

*or email [info@semex.co.nz](mailto:info@semex.co.nz) for more information*

*The winner will be announced at Mystery Creek on 15th June 2018*

**Terms & Conditions** This prize equates to \$10,000 (Recommended Retail Price excluding GST) of Immunity+ semen, selected from current available Immunity+ Sires (conventional only). This prize is for product and cannot be redeemed for cash or credit amount. Orders need to be placed between 1st January, 2018 - 15th June, 2018 and delivered when required in 2018 to be eligible for entry into the competition. Prize winner will be announced at Mystery Creek on Friday 15th June, 2018. Winning prize must be dispatched in 2018, once ordered and included in the competition, original order cannot be altered or cancelled. Competition is open to one entry per farm and must be a dairy farmer living in New Zealand. Entry closes at 2.00pm on 15th June, 2018. Prize will be drawn at Mystery Creek. Winner will be notified by email / phone and advertised on our website by June 30th, 2018.

PO Box 248, Morrinsville, NZ 3340 | 32 Lorne Street, Morrinsville, NZ

T: 07 889 1572 or 07 889 1573 | F: 07 889 1574

FREE CALL: 0508 473 639 | E: [info@semex.co.nz](mailto:info@semex.co.nz)



[www.semex.co.nz](http://www.semex.co.nz)

# RIVERINA JERSEYS

INTRODUCING  
Riverina Ronaldo Champ  
BW 204/77

**STARS OF  
THE FUTURE**

Yet another graduate to be marketed by an  
AB Company.  
Same family as Riverina Colonel ET.



Riverina Sergeant Girl S3J BW:227 PW:426 LW:519



Riverina Hector Carrie BW:218 PW:317 LW:287

- 10 heifers to sell at Waikato Invitational Sale out of Okura, Willersden, Noakes, Wanderholm and Vinawa cow families and by Strider, Terrific, Hector and Bounty.
- Two entries in the Jersey Pride Sale - both L.I.C contracts. Riverina Speed Chrissy (8-8) EX BW:221 PW:287 LW:337 incalf to Flaxmill LT Dane and Riverina SWS Brace S3J BW:186 PW:165 out of Pukeroa and Bracecell ET.

**Warren, Louise, Jordan and Liam Berry – Email [warrenberry@extra.co.nz](mailto:warrenberry@extra.co.nz)**



## WJCB Annual Conference & Tour to the US – June 2018

The 21st International Conference of the World Jersey Cattle Bureau, is being held in conjunction with the 150th Anniversary of the founding of the US Association.

The Breed for the 21st Century is the organising theme for the 21st Conference, bringing into focus the opportunities for Jersey breed expansion that exist across the globe and sharing information on the key advances in genomics, management, and marketing that can make those opportunities into realities.

Harvest Travel International, founding member of Agricultural Tour Operators International (ATOI), has organised a three-week program including:

*Your choice of two pre-conference tours:*

*Tour A*, June 19-23, arriving in San Francisco, California then on to Hilmar, or *Tour B*, June 18-23, landing in Portland, Oregon to visit herds in the Willamette Valley and Tillamook.

*Main Conference;*

An eight-day program that begins with arrival at John Glenn Columbus International Airport (CMH) on June 23 and travels through the State of Ohio to arrive in Canton for the WJCB International Conference and the AJCA-NAJ Annual Meetings, hosted by the Ohio Jersey Breeders Association, and concluding the evening of June 30 with the WJCB President's Gala Banquet; and Post-Conference Tour starting in Chicago on July 1 and traveling through southern Wisconsin and northern Illinois to end back in Chicago for departure on July 8.

During the Main Conference week, a program track will be organized specifically for attendees under the age of 36. The program and speakers for this World Young Jersey Breeders Congress will be tailored to attendee interests determined by survey.

Should you have questions about this program, please address them to Dr. Cherie Bayer (cbayer@usjersey.com).

Closing date for bookings is Friday, March 30, 2018.  
For more information check out the Jersey NZ website [www.jersey.org.nz](http://www.jersey.org.nz)

## Youth Committee Heifer Raffle Supporting Jersey Youth – APPLY NOW!

Contact the Jersey NZ office to purchase your ticket. For more info go to pg 21



Previously  
Jo Anne Prevett  
Travel



*hey you*

**Same face. New name.** Welcome to **YOU Travel Matamata**, the new travel company that's all about one thing. **YOU** isn't just our new name, it's our whole philosophy of delivering an unrivalled travel experience to our customers. And while the faces are still the same, we've made changes that will take what we do to the next level and beyond.

**YOU Travel Matamata**  
81 Broadway, Matamata  
P 07 888 7186 | E [enquiry@youmatamata.co.nz](mailto:enquiry@youmatamata.co.nz)



## WJCB Annual Conference & Tour to the US – June 2018



### THE BREED FOR THE 21<sup>st</sup> CENTURY

INTERNATIONAL CONFERENCE OF THE  
WORLD JERSEY CATTLE BUREAU

The United States of America—*home of the largest and fastest-growing population of Jersey cattle in the world*—hosts the **21<sup>st</sup> International Conference of the World Jersey Cattle Bureau** in conjunction with the **150<sup>th</sup> Anniversary of the American Jersey Cattle Association**.

This program offers unmatched opportunities for everyone producing and marketing Jersey milk, milk products, and Jersey genetics, and especially those considering entering or expanding in the Jersey business. Speakers for the International Conference confirmed at December 1 include Larry Schirm, who brings a lifetime of Jersey experience to his role as ABS Global Key Account Manager; Dr. Dennis Saviano, Virginia C. Meredith Professor of Nutrition Policy at Purdue

University; Dr. Francis Fluharty, Research Professor, The Ohio State University; and Andrew Le Gallais, Chairman of the Jersey Milk Marketing Board.

The three-week itinerary includes visits to the American Jersey Cattle Association headquarters offices, 30 top-performing herds in five states and North America's largest A.I. bull center; expert presentations in a series of educational programs that include a research field day at the U.S. Dairy Forage Research Center farm; and city tours in San Francisco or Portland, Columbus, and Chicago.

The **21<sup>st</sup> International Conference** is where you will share ideas, learn about the advances in genomics, management and marketing and network with Jersey owners expected from 20 countries.





# WAITEITEI JERSEYS COMPLETE DISPERSAL SALE



**On farm Wednesday 6th June 2018 at 11.00 am**

## **COMPRISING**

- Approx 80 cows
- 37 in calf heifers
- 37 yearling heifers
- 2 bulls
- A no nonsense herd that has never had palm kernel or maize silage, only molasses in the shed.
- Herd averages between 350 and 400 per cow
- Current Herd classified for 63 EX, 32 VG and 4 GP
- 2017 Classification 35 head classified for 22 EX, 12 VG and 1 GP
- Feature families include Okura BD Max ET, EX4 9/9 and her descendants including Waiteitei Expo Maxina ET, EX3, dam of Waiteitei Super Maxwell (pictured).

Other feature families include descendants of Omens Beauty, Omens Belle, Bouquet and Marie of Big Hollow fame. Sires represented include Maunga, Zeus, Speedway, Terrific, Q Zic, Lester Desire, Maxwell, Murmur, Northern Exposure. Heifers by Raceway, Speedway, Zeus Maxwell and Integrity. Yearlings by Desi, Speedway. Zeus and Integrity

*Selling Agents: Brian Robinson Livestock and Jersey Marketing Services*

*Brian Robinson: 07 858 3132 or 027 241 0051 Ross Riddell: 07 8715691 or 027 2111112*

*Kevin Hart: 078546220 or 0272915575 Grant Aitken: 098560731 or 0272458821*

**Vendor: Graeme Collins P: 09 423 7058 (pref) or M: 027 426 1172**



## **"THE JERSEY SPECIALIST THAT MARKETS ALL BREEDS"**

**BUYING OR SELLING, Paddock OR AUCTION,  
WE CAN HELP YOU.**

**The Chardonnay Jersey Stud herd of 150 cows and 40 incalf heifers are for sale in the paddock. A wonderful opportunity for someone to utilise the successful lifetime endeavours of another breeder at a realistic price.**

**JMS HAS ALL CLASSES OF STOCK LISTED FOR SALE.**

### **AUTUMN SALE SERIES:**

Kohitiata Jersey Sale - Dannevirke	9th April
Jersey Power Sale - Te Awamutu	26th April
Waikato Invitational Sale - Orini	1st May
Carnmor and Mount Cosy - Te Awamutu	4th May
Merrifields Invitational Sale - Palmerston North	24th May
Waiteitei Dispersal & Elite Heifer Sale - Wellsford	6th June
Jersey Pride Annual Sale - Whangarei	7th June

### **FOR ENQUIRIES AND CATALOGUES CONTACT**

Ross Riddell m: 0272 111 112 E: [rriddell@jersey.org.nz](mailto:rriddell@jersey.org.nz)

Grant Aiken m: 0272 458 821 Whangarei E: [grantw.aiken@gmail.com](mailto:grantw.aiken@gmail.com)

## M. Bovis ... A bad situation

**Dr. Joe McGrath**  
**Technical Manager Ruminants, DSM**  
**Senior Lecturer – Ruminant Nutrition,**  
**University of New England, Australia**

There has been a lot written about the M. Bovis discovery in NZ. However, as a person who has been witness from the very start the most troubling thing is not the disease, not the repercussions, but the media.

The media has not interrogated or asked any investigative questions that may shed light on some of the facts that any astute person involved in agriculture can see clearly don't add up.

The first area that the media needs to investigate is to generate some understanding of what does this disease look like on farm in New Zealand. This is pretty simple to find out. As of writing this article there are 23 confirmed positive cases (was 21 when I started). Call the farmer and ask "what is life like with Bovis?".

In the cases that I am aware of they would have found out something that may have come as a surprise. The farmers did not know they had it. Life was normal, mastitis was not excessive. Cell count was typical, no signs of lameness or pneumonia. MPI commented that this could just be an incubation phase, in many cases this phase appears to be well over 18 months.

To my knowledge there is only one dairy farm that demonstrated any issues that would be considered unusual. That was the farm that reported non-treatable cases of mastitis. If this farm had done what was typically advised by local veterinarians and culled the animals that did not respond to treatment, life as the owners know it would not have changed. Unfortunately, they took the path of consulting other professionals who pointed them in the direction of Bovis. Van Leeuwen group are now footing the bill for their diligence.

It must also be understood that after advanced hygiene practices and strategic dry offs had been implemented on this farm production returned to normal. Animal health was normal and the farm functioning well when the cull took place five months later.



*Joe McGrath - Technical Manager Ruminants*

To put one set of false reporting and rumour to bed the farm that had a true Bovis outbreak is a pasture based farm. The only difference between this farm and the majority of the New Zealand operations is that they had batch calving, ie. winter and spring milkers on the same farm. This allowed them to carry over cows, likely the reason for manifestation of the disease. Perhaps also likely why the disease is not a problem on the other farms that have been found to be carriers.

The second line of questions should be around the time frame of the suspected "outbreak". According to the evidence put to the Van Leeuwen group the movements of animals between properties can be traced past 18 months. How can a disease be an outbreak and industry threatening if it has been in the industry for 18 months or more? Media releases have indicated that the disease is rolling from one farm to another, but movements of cattle between these farms are over 12 months apart.

Put simply, if the disease is so devastating how could a farm have it for over a year and not know about it?

The third line of enquiry should investigate the testing procedure. Testing for hard to find diseases is not easy work, I do not envy the team at MPI. However, several aspects around sensitivity and specificity need to be examined in the public arena. Sensitivity refers to finding the level of infection on a farm. For example, in a herd of 1000 cows you can run a milk sample test that will find one shedding cow in a 1000 or five shedding cows in a 1000. It is a lot cheaper and easier to look for five shedding cows. The way Bovis works is to sit idle in cows for many months, perhaps years or perhaps decades. From time to time the bacteria will shed (causing bacteria to be transmitted in milk or mucous), but in many cases not at all. MPI were asked to comment on the differences between sensitivity in testing regimes but declined.



Previous survey work in New Zealand revealed no Bovis (McDonald et al. 2009) however, the level of sensitivity was much lower and farms were only tested once. Several of the van Leeuwen groups herds were tested negative multiple time before they found a positive shedding animal. If the van Leeuwen group herds had been tested under this protocol it is likely they would not have been found to be Bovis carrier herds. Furthermore, if the van Leeuwen group herds had been tested at the same level of sensitivity as the neighbours then those farms would not have been found to be infected, saving the lives of 1000's of happy, healthy cows.

To further put this into context, if the other subsequently diagnosed van Leeuwen farms took part in the national screening there is a very real chance that they may not have been found to be carrying Bovis. How does this reflect confidence in the national testing regime?

The fourth line of enquiry should simply be about the source. If you don't have a source it makes it very hard to confine and then eradicate. According to epidemiologist Professor Mark Stevenson you would need to have tested nationally at a high level of sensitivity to be sure of confining the problem to the Waimate area without having a source. If you have not tested every herd in New Zealand to a level of sensitivity that is satisfactory then you cannot say the country is Bovis free. The initial cull would have appeared to be a mistake in light of further test results. This potential problem was presented to MPI before the cull took place.

Eradication plans are costly, devastating for the families involved and rarely successful, so they need to be carefully thought through. Look at Johnes disease in the Australia beef industry and the devastation it caused before being effectively given up on. Look at the success of other programs in New Zealand, Verroa, Fire blight, PSA, the list goes on. While there are positive cases of eradication (hydatids, Brucellosis), the assessment of potential success is critical, the cost benefit analysis is critical and needs to be made public and evaluated.

The fifth line of enquiry from the media should be about money. I am not talking about compensation and valuations and all of the complicated things that the government should take due diligence with. But the basic cash flow principles of dairy farming.

If you cull a cow then the farm receives the cull money in the 10-14d from the meat company. According to the van Leeuwen group they culled approximately 4000 viable, healthy, fit cows in peak lactation in November and December. These cows had their valuations agreed on before slaughter. This basic payment does not need any further discussion. Unlike the lost milk production and various other costs. The VLG group are financing the program to date, is this fair?

So where would these lines of enquiry leave a journalist in New Zealand? Who knows. But the one fact of the matter is the insidious disease that is *Mycoplasma bovis* does not appear to be a devastating disease under New Zealand conditions. Is this not a good news story for New Zealand dairy? Under the New Zealand system of seasonal production, rigorous culling and low per cow milk production the disease appears to sit unnoticed in all but one dairy herd that it has so far been found in.

After all, according to an Australian vet Trystan Keylock who works with Bovis herds in Australia "Bovis is far from being the main animal health issue on farm". To put this in context according to the van Leeuwen group Bovis has killed 6 of their cows (0.03%) out of the approximately 21000 cows infected (23 confirmed farms), or more likely "carrying or exposed to Bovis". Milk fever kills approximately 0.1% and costs the industry over \$1 billion per year and would cost \$50 million annually to largely prevent. Probably the scariest to me is that last spring I interviewed 12 farmers in the South Island and the average increase in dairy cow "wastage", or death loss was 1% since they had gone onto using fodder beet with its associated mineral deficiencies.

MPI commented that this is not the only measurement used for assessing damage to dairy businesses in generations to come. While this is true, the question must also be asked why New Zealand is the only country attempting to eradicate Bovis.

I would hope that a good investigative journalist would be able to answer the question "does the response reflect the magnitude of the problem?"

1936

# RIVERMERE JERSEYS

2018

PRIDE

PERFORMANCE

PERFECTION



**2017  
CLASSIFICATION  
RESULT  
67 ANIMALS  
PRESENTED  
46 EX  
21 VG AWARDS  
RECEIVED**

An ELITE selection of the above heifers will be available for sale at the Northern Wairoa combined breeders heifer sale.

Sires include Raceway, Vanahlem, Aussie Gold, Superstition, Rivermere Expos Leader and half-brothers Rivermere Speedy Jacko and Rivermere Charles Justice.

This sale will be held in conjunction with Graeme Collins Waiteitei Dispersal Sale on the Waiteitei Stud Farm, 6th June at Tomarata Wellsford.

Come North to the A.G.M Conference in Whangarei, 6th- 8th June and celebrate with us Graeme's lifelong involvement with the Jersey breed. A sale and occasion not to be missed!

See you there!

Enquiries always welcome

Barry & Mary Montgomery ~ Mititai ~ R D 10, Dargaville  
Ph/fax (09) 439 7968 Email [rivermerejerseys@gmail.com](mailto:rivermerejerseys@gmail.com)

## North Island Championships – Feilding

Thursday 1 February 2018

Judge: Rob Anderson, Victoria, Australia

A fantastic turnout of animals competed for the title of Jersey NZ North Island Champion cow and what an ideal place to compete for it at the NZ Dairy Event's 10th Show.

Once again Ferdon Genetics seven year old cow; Ferdon B Stone Rose, EX3 sired by the Canadian bull Lencrest Blackstone took out the title of Jersey NZ North Island Championship for the second year running as well as the

titles of Best Uddered Senior Jersey Cow, Senior In-Milk Jersey Champion and Jersey Supreme Champion.

The entry from P & K Horn, Feilding; Kuku Celeb Illusion sired by Galaxies Celebrity ET, was named Jersey NZ North Island Reserve Champion and Senior In-Milk Jersey Reserve Champion Cow. Congratulations.



North Island Champion Cow - Ferdon B Stone Rose



North Island Reserve Champion Cow - Kuku Celeb Illusion

## South Island Championships – Blenheim

Saturday 10 November 2017

Judge: Carol Turner

A beautiful day greeted entrant's vying for the title of Jersey NZ South Island Champion in Blenheim.

The Willowhaugh Jerseys entry of Willowhaugh Mur Diamond sired by the bull Okura Lika Murmur S3J was the overall winner Jersey NZ South Island Champion Cow.

Reserve Champion went to another Willowhaugh entry Willowhaugh Tbone Flirt - Willowhaugh Jerseys (Ian & Christina Jordan). Congratulations.



Jersey NZ South Island Champion Cow - Willowhaugh Mur Diamond



South Island Reserve Champion Cow - Willowhaugh Tbone Flirt



# NZ Dairy Event 2018



The tenth Dairy Event took place at Mansfield Park in Feilding from 31 January to 2 February 2018. The Dairy Event is an outstanding opportunity for all dairy farmers and breed enthusiasts to experience the best that New Zealand has to offer, whether you are an exhibitor or a visitor.

The theme this year was "reflections" - ten years on and going strong.

The star of the show this year went to the Ferdon Genetics entry - Ferdon B Stone Rose, EX3 who proved to be the cow to beat not only in the Jersey section but also in the all breeds. Named Supreme Jersey Champion, this seven year old cow sired by the Canadian bull Lencrest Blackstone, also won her seven year and over Jersey in milk class, was crowned Jersey Best Uddered class, Senior In-Milk Jersey Champion, North Island Jersey In-Milk Champion then went on to duplicate all three results with wins in the all breeds classes. The icing on the cake was winning Supreme All Breeds Supreme Exhibit.

Three year old Arran Tequila Solar was named as Intermediate In-Milk Jersey Champion. Sired by Tower Vue Prime Tequila, Solar who is owned by Arran Trust Ltd was also Best Uddered Intermediate Jersey Cow, and won her three year old Jersey Class. She also went on to win her All Breeds three year in-milk class and was named Intermediate In-Milk All Breeds Champion.

Four year old in-milk Jersey class winner Kuku Celeb Illusion, owned by Peter & Kathy Horn, was named Senior In-Milk Jersey Reserve Champion pipping the 5 & 6 year old Jersey class winner Ferdon T Bone Lorna, Ferdon Genetics for the ribbon.

Last years Jersey Junior Champion Kauri Glen Comerica Peggie sired by Bridon Remake Comerica (Canadian) and owned by Kauri Glen Ltd won the two year in-milk Jersey class and went on to also win her All Breeds class.

In the Junior section, the Senior Yearling heifer Fynreath Genom Rita sired by Ahlem Genominator (US) and owned by Joanna Fowlie was named as Junior Jersey Champion. Jersey Junior Yearling heifer Allandale Tbone Quest owned by Ethan Thorpe who purchased her at the Next Generation Futurity Sale the previous evening from Peter & Kathy Horn, took out the Junior Jersey Reserve Champion, they also were third in the All Breeds Junior heifer class.

The Senior Jersey heifer class winner Fynreath Colton Camila, owned by Joanna Fowlie went on to place second in her all breeds class and won the Next Generation Futurity Class.

Other Jersey successes in the All Breeds classes include Ferdon Blackstone Lippy, EX3, (s. Lencrest Blackstone), Otorohanga, who placed second in the four year old in-milk class.

The Wilbur Trophy for 2018 was taken out for the second year in a row by the Jersey Team. A wonderful exhibit of the best Jersey show cows in the country. Semex Premier Exhibitors Breed Presentation was awarded to Ferdon Genetics.



Senior Best uddered Cow - Ferdon B Stone Rose



Intermediate In-milk Champion Cow - Arran Tequila Solar

# NZ Dairy Event 2018



## JERSEY BREED-ALL NEW ZEALAND SHOW

JUDGE: Rob Anderson, Gippsland, Victoria, Australia

ASSOCIATE JUDGE: Nick Browning, Dargaville, New Zealand

### Jersey 2-year-old in-milk

1. Kauri Glen Comerica Peggie; Kauri Glen Ltd, Matamata
2. Allandale Van BamBam; P & K Horn, Feilding
3. Ferdon Bstone Lacey; Ferdon Genetics, Otorohanga

### Jersey 3-year-old in-milk

1. Arran Tequila Solar; The Donalds, Featherston
2. Kuku Tbone Princess; P & K Horn, Feilding
3. Landell Valentino Eme; Zara Williams, Feilding

### 2018 Intermediate In-Milk Jersey Champion

2018 Best Uddered Intermediate Jersey Cow  
Arran Tequila Solar The Donalds, Featherston

### 2018 Intermediate In-Milk Jersey Reserve Champion

Kuku Tbone Princess P & K Horn, Feilding

### 2018 Intermediate In-Milk Jersey Honorable Mention

Kauri Glen Comerica Peggie; Kauri Glen Ltd, Matamata

### Jersey 4 year old in-milk

1. Kuku Celeb Illusion; P & K Horn, Feilding
2. Ferdon B Stone Lippy; Ferdon Genetics, Otorohanga
3. Allandale Celeb BamBam; P & K Horn, Feilding

### Jersey 5 year & 6 years old in-milk

1. Ferdon T Bone Lorna; Ferdon Genetics, Otorohanga
2. Merrifields Murs Sunlight; R & J Gibson, Longburn
3. Ferdon BRC Lorna; Boyd Ferguson, Otorohanga

### Jersey 7 years & over in-milk

1. Ferdon B Stone Rose Ferdon Genetics, Otorohanga
2. Kuku Sams Adele; P & K Horn, Feilding
3. Braedene Target Molly; Just Jersey Ltd, Otorohanga

### 2018 Jersey NZ North Island Champion

### 2018 Jersey Supreme Champion

### 2018 Senior In-Milk Jersey Champion

### 2018 Best Uddered Senior Jersey Cow

Ferdon B Stone Rose Ferdon Genetics, Otorohanga

### 2018 Senior In-Milk Jersey Reserve Champion

Kuku Celeb Illusion P & K Horn, Feilding

### Jersey Junior Heifer Calf born after: 1 August 2017

1. Ngatea Chloes Lao; Katie Mears, Invercargill
2. Allandale Tbone Lacy; Loren Osbourne, Te Aroaha
3. Landell Topeka Emmy; Riley Taylor, Feilding

### Jersey Senior Heifer Calf born since:

1 June 2017 to 31 July 2017

1. Fynreath Colton Camila; Joanna Fowlie, Waikato
2. Ferdon Colton Viyella; Ferdon Genetics, Otorohanga
3. Ferdon Tequila Caramé; Toia Ferguson, Otorohanga

### Jersey Junior Yearling Heifer born after: 1 August 2016

1. Allandale Tbone Quest; Ethan Thorpe, Otorohanga
2. Ferdon BStone Venus; Ferdon Genetics, Otorohanga
3. Glenhaven AVS Melia; Brett Dyson, Taupiri

### Jersey Senior Yearling Heifer born since:

1 June 2016 to 31 July 2016

1. Fynreath Genom Rita; Joanna Fowlie, Waikato
2. Ferdon Bstone Venna; Ferdon Genetics, Otorohanga
3. Ferdon BF Trinket; Ferdon Genetics, Otorohanga

### 2018 Junior Jersey Champion

Fynreath Genom Rita Joanna Fowlie, Waikato

### 2018 Junior Jersey Reserve Champion

Allandale Tbone Quest Ethan Thorpe, Otorohanga



Junior Jersey Champion - Fynreath Genom Rita with handler Joanna Fowlie

# NZ Dairy Event 2018



## ALL BREEDS - ALL NEW ZEALAND SHOW

**JUDGES PANEL:** Edward Griffins, England (Holstein Friesian): Rob Anderson, Australia (Jersey): Francois Beaudry, Canada (Ayrshire); Geoff Cochrane, Australia (Combined Breeds)

**TIE JUDGE:** Max Hyland, Australia

### All Breeds 2-year-old in-milk as at 1 June 2015

2. Kauri Glen Comerica Peggie  
Kauri Glen Ltd, Matamata

### All Breeds 3-year-old in-milk as at 1 June 2014

1. Arran Tequila Solar  
The Donalds, Featherston

### 2018 Intermediate In-Milk All Breeds Champion

Arran Tequila Solar The Donalds, Featherston

### All Breeds 4 year old in-milk

2. Ferdon B Stone Lippy Ferdon Genetics, Otorohanga
3. Kuku Celeb Illusion P & K Horn, Feilding

### All Breeds 5 year & 6 years old in-milk

1. Ferdon T Bone Lorna Ferdon Genetics, Otorohanga

### All Breeds 7 years & over in-milk

1. Ferdon B Stone Rose Ferdon Genetics, Otorohanga

### All Breeds Best Uddered Senior All Breeds Cow

Ferdon B Stone Rose Ferdon Genetics, Otorohanga

### All Breeds Senior in-milk Champion

Ferdon B Stone Rose Ferdon Genetics, Otorohanga

### Supreme All Breeds Supreme Exhibit

Ferdon B Stone Rose Ferdon Genetics, Otorohanga

### All Breeds Senior Heifer Calf born since: 1 June 2016 to 31 July 2017

- 2 Fynreath Colton Camila Joanna Fowlie, Waikato

### All Breeds Junior Yearling Heifer born after: 1 August 2016

- 3 Allandale Tbone Quest Ethan Thorpe, Otorohanga

## NEXT GENERATION

### Futurity Class

- 1 Fynreath Colton Camila Joanna Fowlie, Waikato



### Wilbur Trophy

A team of four by breed with the four representatives awarded by the breed judge.

1. Jersey
2. Holstein Friesian
3. Ayrshire
4. Brown Swiss
5. Milking Shorthorns

### SEMEX Premier Exhibitors Breed Presentation

Jersey Ferdon Genetics



Supreme All Breeds Champion Cow - Ferdon B Stone Rose



# World Wide Sires All Breeds Young Judge Competition 2018



The World Wide Sires All Breeds Young Judge Competition, organised by the NZ Dairy Breed Federation, took place at the NZ Dairy Event in Feilding on Friday 2 February 2018.

Six youth members; first and second placed entrants from their own respective breed societies - Jersey, Ayrshire and Holstein Friesian competed for this World Wide Sires sponsored trophy. They were Crystal Scown & Katie Mears (Jersey), Courtney Davies & Braydon Schroder (Ayrshire) and Dean Fullerton & Craig Robertson (Holstein Friesian).

The competition saw them judge a line-up of five mixed age cows over a 10 minute period, then individually come out and line the cows up and talk to their placings as in a show situation. They were allocated points by the overjudges Francois Beaudry (Ayrshire International Judge), Barry Montgomery (Jersey) and Duncan Pipe (Holstein Friesian) for their reasons (30 points); verbal presentation (15 points); speed (10 points), ring craft manner & personal appearance (10 points). These are added to the points from their placing of the animals (35 points).

Crystal Scown representing Jersey NZ was the 2018 winner with Dean Fullerton (Holstein Friesian) in second place and Courtney Davies (Ayrshire) in third.

Special thanks to the overjudges, along with the members who made both cows and leaders available for both competitions. We couldn't hold this competition without your support and of course our sponsors World Wide Sires. Thanks also to NZ Dairy Event organisers for their assistance.



Crystal Scown (Jersey NZ) winner of the WWS All Breeds Young Judge Competition

## COMPETITION REMINDERS

**World Wide Sires Photo competition**

Closing Date 31 March 2018

**Marcus Trotter Award**

**Holley Geck Memorial Junior Showing Trophy**

Entry forms will be available online or by request from the office

Closing Date 30 April 2018

## Obituaries

contributed by A Jenkins

**Thomas, Kevin John** – Passed away 25 November 2017 aged 68 years. Member of Opunake Jersey Club. 'Glendoran' Jerseys. Our sympathy to Andrea and family.

**Cook, Julie Madeline** – Died 3 December 2017 aged 82. Wife of Fred Cook 'Broadlands' Jerseys Stratford. Sincere sympathy to the Cook family.

**McIntosh, Gail Helen** – Died 4 January 2018. Daughter of Don (once NZ Jersey Association President) and Jean of Whariti Jerseys Woodville. Our condolences to her siblings Heather, Allan and Dean.

**Lean, Charlotte June** – June died 16 January 2018. June and Dudley farmed their 'Pamir' stud at Woodville keen show enthusiasts. To their family our condolences.

**Clough, James Jackson (Jim)** – Died 21 January 2018 at 84 years. A member of the Opunake Jersey Club. Jim also farmed on the Waiteika Road where his Rocky Acres Stud did good production on such rocky land. Jim had top cow in Opunake Club 1979 with Ngahiwi Top Pin, VHC, 319 Kgs Fat. To Pauline and family our deepest sympathy.

**Nickel, Albert George** – George died 13 January 2018 at 95 years. George farmed the well preformed 'Pokeno' Jerseys. A stud that performed well in the production field.

Service No. 438305 NZ Army 1 Btn Tara Regt Pte. On 13 January 2018, at Hawera Hospital, with family by his side. Dearly loved husband of the late Lorna and Joan. Loved and respected father and father-in-law of Judy and Ray Mainwaring, Dennis (Chocky) and Lyn, Graham (Snow) and Sue, Margie and Dennis Cole, and Marianne. Much loved Grandpa of all his loving grandchildren and great-grandchildren. In his 96th year.

To George's Family we extend our sympathy in their loss. George was a member of Hawera Jersey Club for many years.

---

It is with deep regret and profound sadness we record the passing of the following members, previous members and friends of Jersey New Zealand.

- Betty Thwaites – Past Member
- Barry Dimock – Malibu Jerseys
- Leslie Cavey – Lawson Glen
- Elsie King – Honorary Life Member



## In my opinion

### Linebreeding for 83 years has stood the test of time ...

**Nim Singh founder of the Mount Cosy Jersey Stud prefix is a staunch believer in keeping family bloodlines going. Nim recently sat down and put his opinion to paper with the help of his granddaughter Nikki.**

Having written over 2000 three generation pedigrees and 2000 footnotes for 42 years is why we are in the position to prove that the hybrid vigor is so strong.

Of the many great things that we have experienced the greatest one would be not to let go of the bloodlines that have developed top genetic success, but to breed and line breed to keep them as long as possible.

You only have to read the Mount Cosy catalogues that I have written to see that most of the pedigrees have been planned to keep the family bloodlines going. We do not believe in chopping and changing the sires, because we have proven through experience that to be successful you must stick to the tried and true. That is why clients returned year after year proof of the strength of line bred cattle, such as our most undoubtedly successful sire line Glenmore Rich Harvest who originated from the famous Dunlavin Excellency, Cloverfield Character, Oddicombe Dreaming Sam, Meon Nabob and finally Brampton Dreaming Sam, an unbroken line. This led to our own Mount Cosy Dream Harvest. This sire line goes back 120 years.

Another success story of our line breeding is our five NZ top producers starting from Pretty Primula, 917lb fat 1949-1950; Rangiatea Gentia, 907lb fat, Breed and Dairy Champion, NZ top producer 1955-1956; Mount Cosy Royal Flossie, NZ top Jersey 1959-1960; Mount Cosy Golden Flossie 1000 gal, top cow All Breeds 1968-1969; and Abbeville Royal Sybil, 1000 gal 1035 lb fat in 305 days.

Through their sons, they are still strongly represented in our herd, as we believe in breeding our own herd sires. We have full confidence in their breeding ability, which we have kept within the knowledge of their success. Therefore, our gene pool remains a small select group of quality livestock.

We were one of the pioneers of artificial breeding. Dr James of Livestock first collected semen from Glenmore Rich Harvest in 1958. Those days they were in ampules, which we ordered daily, and they arrived the next day by passenger bus. Now we buy selected semen and are still carrying on with our line breeding.

Anyone using semen in a big way should consider doing their homework to save costs as not all the expensive ones are the best. You would get more satisfaction out of your own selection. These days there is not a lot of difference in the semen, unproven ones can be every bit as good as the proven ones.

You can start your own line breeding by keeping bulls out of your top producers and then using those bulls sons with the daughters.

For example, the famous Glenmore Rich Harvest was the son of Dunlavin Excellency. Another of Excellency's sons Glenmore Royal Vagabond was the sire of Glenmore Ngaire who in turn is the dam of Rich Harvest. This is the first stage of line breeding.

Line breeding isn't a new idea but it's not used as much as it should be in my opinion. To get uniformity and longevity in your cattle that have the same genes no matter what parent they throw to there is less of a chance of failure.

**Nim Singh - Mount Cosy Jersey stud**



---

## Jerseys that New Zealand needs ...

After a period of 30 odd years away from farming, I have recently re-joined Jersey NZ. In January 2018 I was invited to attend International Dairy week at Shepparton-Northern Victoria.

I was privileged to accompany Llyod Wilson of Denson Dale Jerseys and Barry Montgomery of Rivermere Jerseys to this event. Unfortunately, our good friend, Tony Luckin of Leithlea Jerseys was unable to attend because of illness.

Llyod, Barry and I inspected several Jersey herds in the Gippsland area and also several Jersey Herds in the Shepparton area prior to and after IDW. We saw whole herds of Jersey cows of good stature, strength, great capacity and outstanding udders, in both these regions – in my opinion, the very sort of Jerseys we need in NZ. Especially with the environmental changes due to impact NZ. Unfortunately these types of cows have in the main disappeared from our herds in NZ with the push for “efficiency”. The herds we inspected all possessed the wow factor – I certainly had my eyes opened to the possibilities.

IDW itself was a tremendous show with the top six or eight animals in each class being of real quality with the champion and reserve champion cows as good as you would see anywhere.

This was the first time I have been to International Dairy Week and I will endeavour to return in the future. I would encourage all breeders young and not so young to attend if they have previously not been able to.

A huge thanks to the owners of the herds we inspected – lovely people who treated us with great hospitality.

Colin McEldowney – Nampara Jerseys

---

## Where have we come from? ...

Recently I picked up the 50th Golden Jubilee 1902-1952 booklet, interesting reading. Then New Zealand Jerseys covered 80% of NZ's dairy farms. The Jersey association had a membership of 4043 members, 5500 herds were registered.

Where are we now?

Today just over 5% (J16 Jerseys) with another 7% by J12 and J14 bulls, or in other words 'crossbred bulls. Approximately 30% Friesian, down from 60% about 25 years ago with many by F12 and F14 bulls.

The remainder of New Zealand cows are crosses of all descriptions. Why? I have asked many farmers over the years why have you gone away from Jerseys? The answer is still the same fed up with the small fat Jersey with small milk, bad feet, bad legs and udders. Do we listen? No, we're all responsible but do nothing. Without the New Zealand farmer base we have no breed.

Worldwide the Jersey cow has made a high expansion over the last 25 years, expanding in every country around the world, the only breed doing so. New Zealand is the only country going backwards there is a reason

### Where to the Future

There are approximately 275 million dairy cows around the world 5% in New Zealand, approximately  $\frac{3}{4}$  are grazing around the world on pasture or crops,  $\frac{1}{2}$  are wintered in barns because of the climate and soils.

The future is going to change fast because of the environment laws that are coming into force around the world. Lower stocking rates, stopping of chemical fertilizers antibiotics etc so New Zealand will have to change as well, its cows and its farming.

Are we ready or will there be no Jerseys in New Zealand is it our choice or some other choice or some other choice doing it for us.

Lloyd Wilson - Denson Dale Jerseys

---

*Opinions expressed by editorial contributors or claims made in advertisements are not necessarily those of The Jersey FOCUS, General Manager and Board of Jersey NZ.*

# Zenith

## JERSEYS

### UDDER CONFORMATION

**BREEDING FOR RESULTS IN NEW ZEALAND  
FOR OVER 30 YEARS**



UDDER CONFORMATION

Russell & Alison Gibb  
127 Procter Road,  
RD2 Taupiri 3792,  
New Zealand

☎ 07 824 4425  
✉ [arrk.gibb@gmail.com](mailto:arrk.gibb@gmail.com)

## Lower Waikato Jersey Club

President Russell Gibb, Zenith  
 Secretary Alison Gibb, Zenith  
 Publicity Colin Hickey, Kaitaka

In June the Lower Waikato Cattle Club have their annual Heifer competition and Gaydene Memorial Production Awards, the results are as follows:

*Complete Line of In Calf Heifers*  
 Natalie Gibb, Ebboni

*3x1 Sire*  
 Colin and Nicola Hickey, Katitaka – Lynbrook Terrific

*Gaydene Memorial Production Awards for 2, 3, and 4-year-old cows*  
 Brett Dyson

*Gaydene Memorial Production Award Elite Cow*  
 Gavin & Catherine Vowles – Two View Elfrida

In November the Lower Waikato Jersey Cattle Club celebrated their 50th Annual show in the beautiful grounds of Woodlands Estate, Gordonton.

Mr Philip Hentschke from Australia was invited to judge the 22 class show which included an additional class, Champion of Champions, where members were invited to exhibit any champion cows from the previous shows. This class was won by Brett Dyson with his 13-year-old cow Glenhaven Marks Sara – a tremendous cow who has been successful in many show rings and who still is a pleasure to have in his herd.

Champion cow was won by Russell and Alison Gibb with Zenith Jante Wanda and Reserve Champion by Steve and Wendy Skelton with Highrange Jazz Primrose.

Junior Champion was won by Brett Dyson with Glenhaven AVS Melia and Reserve by Natalie Gibb with Ebboni Quick Fifi.

Recently the number of junior members has increased and it was great to have junior handler classes added to the programme. Young handlers, Junior members 12 years and over was won by Molly Fletcher and Junior members 11 years and under was won by Gabrielle Scherer.

The day concluded with an evening meal held in Prof's café at the Woodlands Estate.

In December the Type and Production awards were judged by James and Alayna Wallace. This is an on-farm competition which is based on the figures used for the Semex On-Farm Challenge.

Winner – Steve & Wendy Skelton, Highrange Jerseys  
 3x1 Sire – Gavin & Catherine Vowles – Tironui OM Joskin

### Contributed by Alison Gibb



CHAMPION OF CHAMPIONS - Glenhaven Marks Sara with Judge Philip Hentschke from Australia (left) and Brett Dyson (right).



CHAMPION COW - Zenith Jante Wanda with handler and owner Russell Gibb



Judging ring - Woodlands Estate



## Northern Wairoa Jersey Club

President	Murray Law, Lawmuir Jerseys
Secretary	Margaret Pinny, Totara Dale
Publicity	Margaret Pinny, Totara Dale

The Northern Wairoa Allbreeds Youth Show was organised and held at the Browning residence of Totara Dale Jerseys at Waihue in Dargaville.

Eighteen children from 5 to 21 years completed with their animals, mainly Jersey but invited Ayrshire and Friesian entries.

There was a fine display of animals and judges Graeme Collins and Belinda Harris said it was a fantastic day and a pleasure to judge and help our younger up and coming members.

We had a pooled lunch and President Alison Gibb was welcomed to our day and gave a small speech to the children on youth participation and their future.

After lunch tips on young handlers A&P class presentation was done by Graeme and his niece Jennifer Thomas and ribbons and cups were awarded with thanks to Fonterra grassroots for sponsoring.

*Junior Champion Calf*  
Drew Mc Dermott

*Reserve Champion Junior Calf*  
Sam Browning

*Senior Champion Calf*  
Bailie Schick

*Reserve Champion Senior Calf*  
Sarah Thomas

*Champion Yearling*  
Katelyn Kumar

*Reserve Champion Yearling*  
Sarah Thomas

*Overall Champion Fonterra Grassroots Cup*  
Sam Browning

*Reserve Overall Champion*  
Bailie Schick.

**Contributed by Margaret Pinny, Totara Dale**



Evan Browning with assistance from Hannah Nichols.



Danica Beardsall with her yearling

## Te Awamutu Jersey Club

President Shaun Good, Thornwood  
 Secretary Marion Johnson, Somerton  
 Publicity Don Shaw, Kiwi

The Te Awamutu Club have had a very busy schedule of events.

The Jersey Classic Show at Kihikihi had strong entries in most classes and the Judge Mr Philip Hentschke from Australia was impressed by the quality of animals on display and also the number of young people participating.

Platinum sponsor Agrisea and local businesses in strong support is vital to the Classics ongoing success.

### *Junior Female Champion*

Karaka Brahms Linda - Caitlyn Turner

### *Reserve Junior Female Champion*

Ferdon Celebrity Lily - Ferdon Genetics

### *Intermediate Champion*

Ferdon Tequila Conita - Ferdon Genetics  
 Reserve – Ferdon BS Vienna ET - Ferdon Genetics

### *Senior Champion*

Braedene Target Molly - Just Jersey Ltd  
 Reserve – Ferdon Tbone Lorna - Ferdon Genetics  
 Judges Honourable Mention;  
 Thornlea Jos Dolly - Just Jersey Ltd

### *AGRISEA NZ Jersey Classic Champion Cow*

Braedene Target Molly - Just Jersey Ltd

Next up, in early December the Xmas Parade in Te Awamutu was held. Our Club supports this event with a float of which there were 61 in total paraded. On board the float was Aleasha Shaw with her recent purchase from R & J Gibson - Manawatu; Thornton Park Mans Gay, EX. After the parade the calves from Chris & Jennifer Turner were at the park for the young children to pat and inspect.

Our pre Xmas lunch was a pot luck at Warren & Louise Berry's farm at Owairaka. Utes and 4 wheel drive vehicles were necessary for a tour around the farm and what a fantastic view they had at the very top!

We then spent a relaxing afternoon having a scrumptious lunch and plenty of talking about breed issues and the dry weather.

More recently in February we had our On Farm Competition over two days. There were record entries and Judge Derek Black was kept on his toes.

### *Highest Conformation Cow -*

Ashvale Noble Emmy ET - C & D Perrott.

Runner Up: Carnmor Murmurs Joygirl - R & P Adam

Melissa and Stacey also stepped out of the Jersey NZ office to come and view the herds of Warren & Louise Berry and Glenn & Chantal Wilson.

Special mention for Richard & Pauline Adam who were placed first in six of the seven classes they were able to enter. They can be proud of their breeding which combines indexes and maintains a high standard of type.

The other winner was Glenn & Chantal Wilson who won the other two classes.

### **Contributed by Don Shaw**



Crescent Excell Audrey EX, 8-9 owned by Glenn & Chantal Wilson



### *AGRISEA NZ Jersey Classic Champion Cow*

Braedene Target Molly - Just Jersey Ltd

L to R: Esme, Julz, Philip Hentschke, Ross, Nigel, Thomas & Ellie-May Riddell.



FIRST NAME	PRESIDENT	SECRETARY	MAIN EMAIL	PHONE
Canterbury Jersey	Steve Ireland	Steve Ireland	lynbrook@farmside.co.nz	021 214 1613
Dannevirke Jersey	Wayne Johnstone	Ruth Johnstone	waynejohnstone@xtra.co.nz	06 374 8252
Franklin Jersey	Linda Wood	Trudy Smyth	trudysmyth@xtra.co.nz	09 296 5865
Hawera Jersey	Linda Megaw	Kelvin Tosland	tozzies@xtra.co.nz	06 274 9123
Karamea Jersey	Brian Jones	Debbie Langford	langford@farmside.co.nz	03 782 6650
Lower Waikato Jersey	Russell Gibb	Alison Gibb	arrk.gibb@gmail.com	07 824 4425
Manawatu Jersey	Ian Cocker	Eileen McQuillan	bellamour@xtra.co.nz	06 324 8749
Marlborough Jersey	Hartley Neal	Christina Jordan	wjordan@xtra.co.nz	027 628 5308
Nelson/Golden Bay Jersey	Wayne Packard	Brian Nesbit	chardonnay.nz@gmail.com	03 525 9969
North Taranaki Jersey	Barry Harvey			06 752 7349
Northern Wairoa Jersey	Murray Law	Margaret Pinny	marg_pinny@xtra.co.nz	09 439 4560
Okato/Cape Egmont Jersey		Bruce Sim	margaretsim74@gmail.com	06 752 4482
Rotorua/Reporoa Jersey		Henry Van der Hulst	parkwood-reporoa@xtra.co.nz	07 333 8494
South Waikato Jersey		Gayle Sneddon	t.g.sneddon@xtra.co.nz	07 886 6870
Southland Jersey	Sandy Simmons	Graham Smith	teeweez@slingshot.co.nz	03 206 6695
Te Aroha Jersey	Andy Walford	Marian Wallace	grahmarjerseys@yahoo.co.uk	07 884 7575
Te Awamutu Jersey	Shaun Good	Marion Johnson	mpjohnson@no8wireless.co.nz	07 871 2983
Te Puke Jersey	Tom McDowell	Margaret Scrimgeour	jscrim@xtra.co.nz	
Thames Valley Jersey	Julie Pirie	Michelle Johnson	greenleaffarm123@gmail.com	027 818 3447
Wairarapa Jersey	Kevin Coker	Sue Prescow	jacs.xr6@gmail.com	06 375 8595
Westland Jersey	Elaine Martin	Jackie Monk	hawthorn4grove@xtra.co.nz	03 755 6043
Whangarei Jersey	Lyna Beehre	Jodeen Cutforth	bluelyna@xtra.co.nz	09 433 8767



## Advertisers Index

Animal Breeding Service	Ohaupo	Inside Back
Ardachie Polled Jerseys	Marton	34
CRV Ambreed	Hamilton	Outside Back
Genetic Choice	New Zealand	42
Genetic Enterprises	Cambridge	18
Jersey Future	Hamilton	12
Jersey Marketing Service	Hamilton	65
Jersey NZ	Hamilton	5
Just Jerseys Ltd	Otorohanga	30 & 31
Lynrook Farm	Temuka	22
Mirodale	Te Awamutu	11
Riverina Jerseys	Te Awamutu	61
Rivermere Jerseys	Dargaville	68
Semex NZ	Morrinsville	61
Smart Farm Data	Hamilton	13
The Girls - Baldies	Taranaki	38
Waiteitei Jerseys	Wellsford	64
World Wide Sires	New Zealand	Inside Front
You Travel	Matamata	62
Zenith Jerseys	Taupiri	77




### Next Issue

SEPTEMBER 2018

### Deadline

Bookings for advertisements  
3 August 2018

Material for advertisements  
10 August 2018

### Subscriptions

Published March and September of every year. Free to Jersey New Zealand members. Subscription \$60.00 plus GST per annum or \$NZ70.00 for overseas subscribers.

### In My Opinion

We invite your contributions In My Opinion. Not all contributions will necessarily be published and the Editor reserves the right to edit articles for publication and to have the right of reply on any issues raised. All informed comment (letters and articles) will be considered for publications.

### The Editor Reserves the Right

To accept, amend or reject any advertisements, editorial or article submitted for publication. While every effort will be made to publish advertisements as ordered, no responsibility is taken for the failure of an advertisement to appear as ordered or for any errors or omissions in the printed copy.

Opinions expressed by editorial contributors or claims made in advertisements are not necessarily those of The Jersey FOCUS, General Manager and Board of Jersey NZ.

© Jersey NZ 2018

All rights reserved. Permission for one time reproduction of selected editorial may be granted by contacting the editor.



# **DELIVERING EXCELLENCE**

## ***IN ALL AREAS OF REPRODUCTION***

- **MOET and TVR embryo options**
- **Recipient options; your recipients or ours**
- **Synchronisation and AI in cows and heifers**
- **Semen Collection; On-centre or On-farm**
- **Bull fertility testing**

*Contact our veterinarians to discuss options*

JACQUI FORSYTH 027 472 7231 | JOHN HEPBURN 027 280 1805 | ANDREW RUSSO 022 376 4027

OFFICE +64 7 843 3808 | EMAIL [info@abreeds.co.nz](mailto:info@abreeds.co.nz) | WEB [www.abreeds.co.nz](http://www.abreeds.co.nz)

# CRV STANDS FOR HEALTHY & EFFICIENT COWS

## BETTER LIFE HEALTH

- ✓ Udder Overall
- ✓ Condition Score
- ✓ Fertility
- ✓ Capacity
- ✓ Calving Difficulty
- ✓ Overall Opinion
- ✓ SCC
- ✓ Longevity



- Progeny will have lower rate of health incidents.
- Cows that are easy to manage and produce with fewer health related issues.

## BETTER LIFE EFFICIENCY

- ✓ Milk
- ✓ Protein
- ✓ Fertility
- ✓ Fat
- ✓ Liveweight
- ✓ Longevity



- Supports sustainable dairy farming.
- Cows with high longevity that produce lots of solids per kg of feed.

## UNDERSTANDING THE INDEX

% more healthy/efficient,  
than population average

**1-4%** = Improved performance

**5-9%** = Excellent performance

**10%+** = Superior performance

Example:

BETTER LIFE  
HEALTH

3%



BETTER LIFE  
EFFICIENCY

10%

